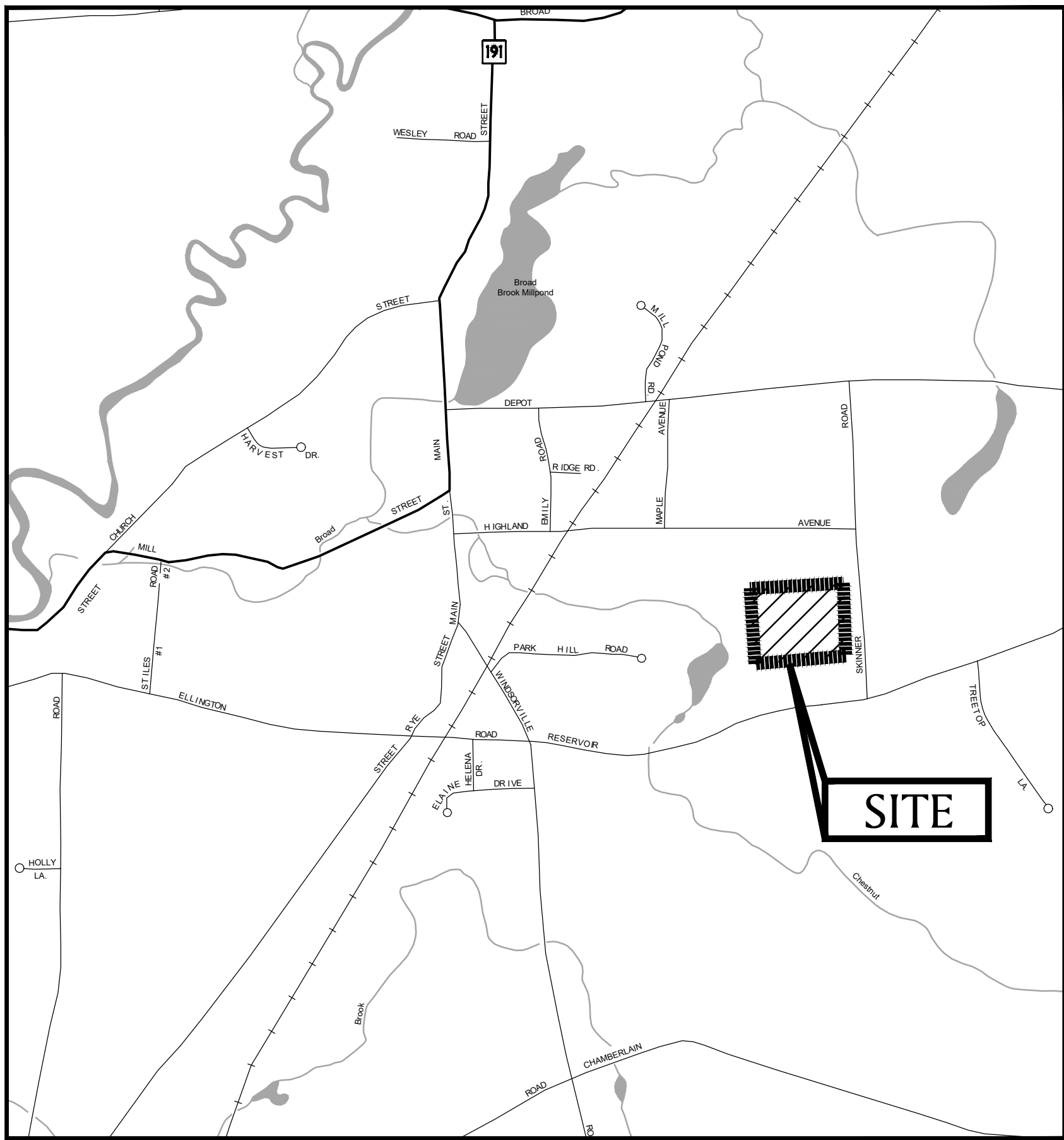
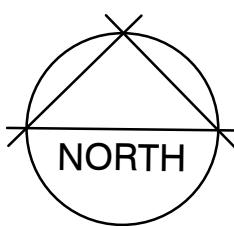


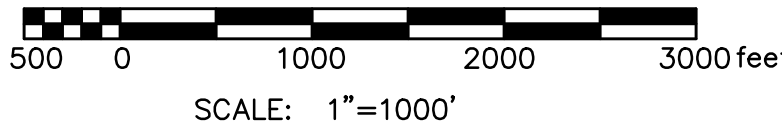
PLAYGROUND AT EAST WINDSOR PARK

27 RESERVOIR AVENUE
EAST WINDSOR, CT

MARCH 17, 2023



SITE MAP



INDEX OF DRAWINGS

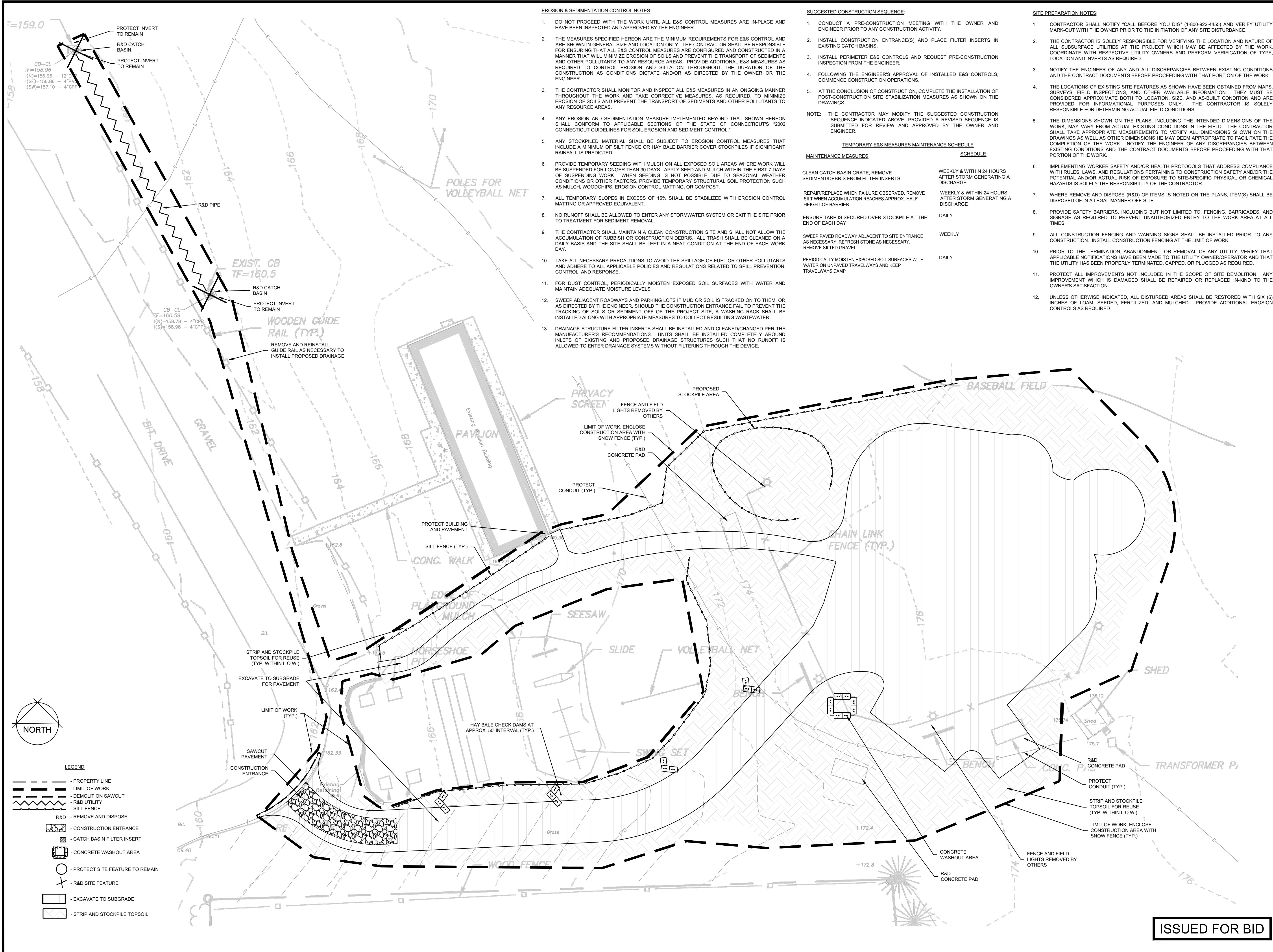
T-1.0	TITLE SHEET
1	EXISTING CONDITIONS PLAN
L-1.0	SITE PREPARATION & DEMOLITION PLAN
L-2.0	MATERIALS PLAN
L-2.1	PLAYGROUND PLAN
L-3.0	GRADING, DRAINAGE, AND LAYOUT PLAN
L-4.0 - L-4.1	DETAILS

PREPARED FOR:
TOWN OF EAST WINDSOR
11 RYE STREET
BROAD BROOK, CT 06016

PREPARED BY:

 **BSC GROUP**
655 Winding Brook Drive
Glastonbury, Connecticut 06033
860 652 8227

ISSUED FOR BID



PLAYGROUND
AT EAST
WINDSOR PARK

27 RESERVOIR AVENUE

IN
EAST WINDSOR

SITE PREPARATION
AND DEMOLITION PLAN

MARCH 17, 2023

REVISIONS:

1	03/15/2023	RESPONSE TO ENGINEERING COMMENTS

PREPARED FOR:
TOWN OF EAST WINDSOR
11 RYE STREET
BROAD BROOK, CT 06016

BSC GROUP
655 Winding Brook Drive
Glastonbury, Connecticut 06033
860 652 8227

© 2022 BSC GROUP, INC.

1" = 20'
0 10 20 40 FEET

FILE: FILE 8387500/Landscape/Drawings

DWG. NO: BASE

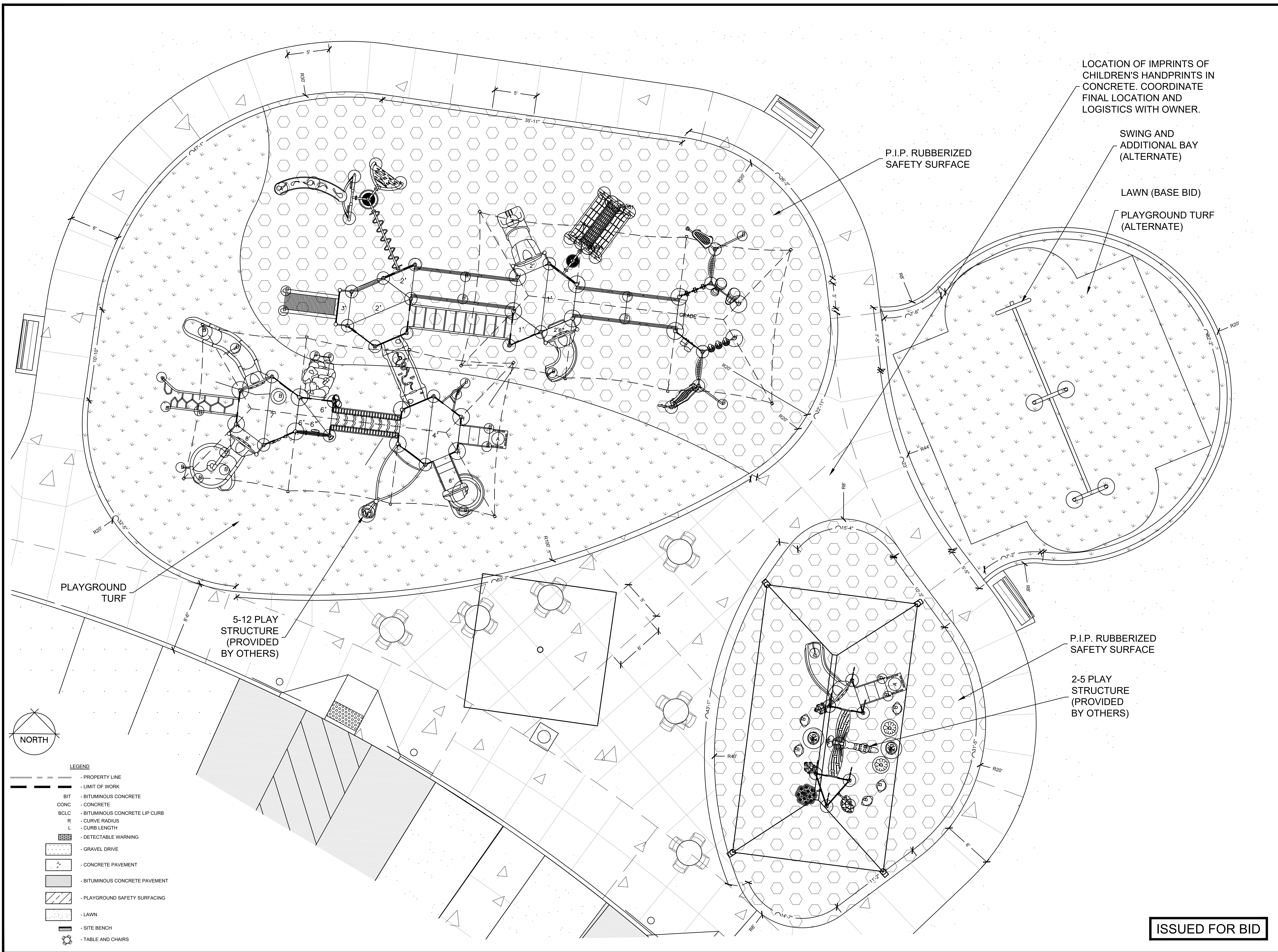
JOB. NO: JOB# 83875.00

L-1.0

ISSUED FOR BID



-2.0



PLAYGROUND
AT EAST
WINDSOR PARK

27 RESERVOIR AVENUE

IN

EAST WINDSOR

PLAYGROUND PLAN

MARCH 17, 2023

REVISIONS:	

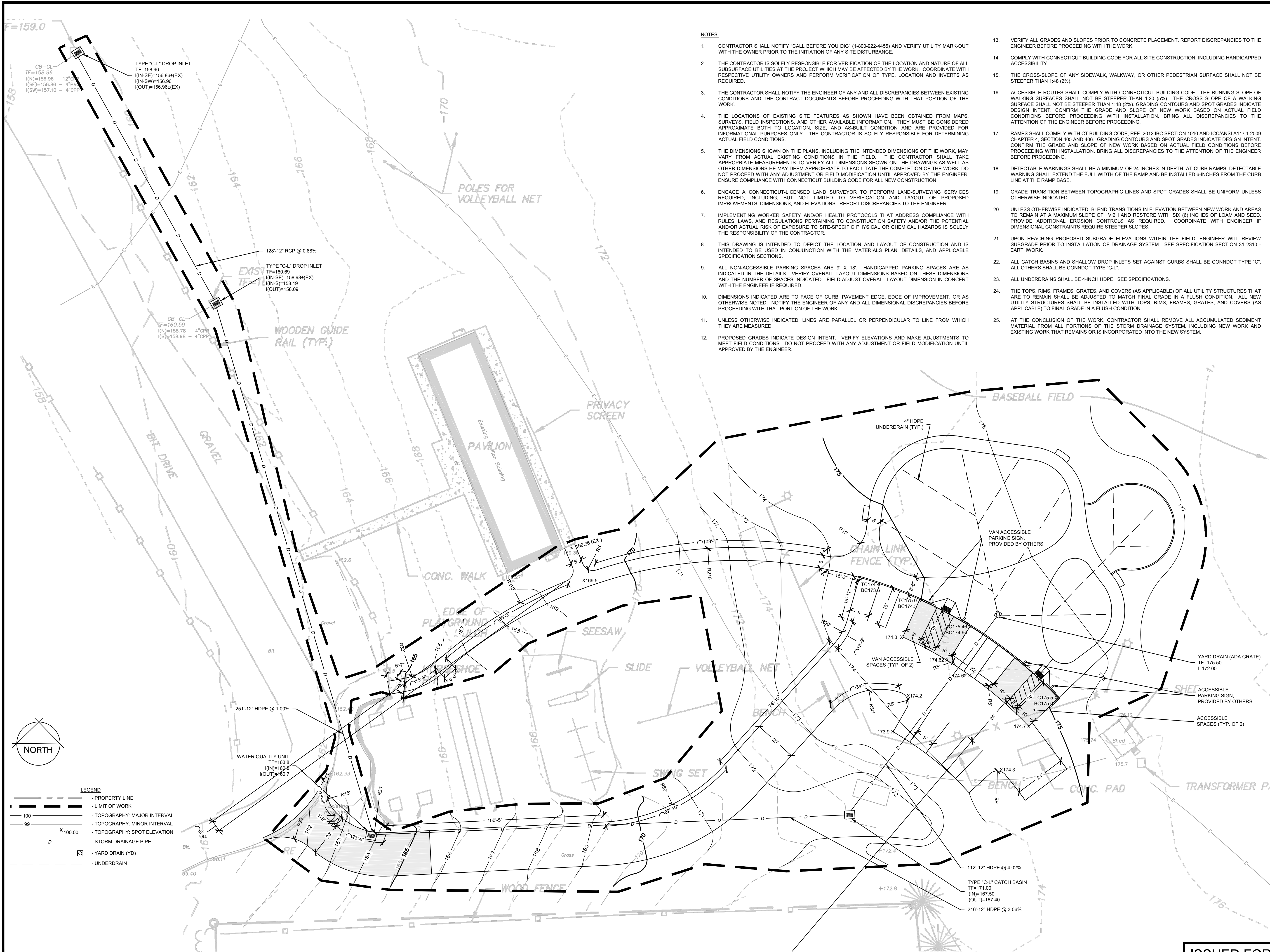
PREPARED FOR:
TOWN OF EAST WINDSOR
11 RYE STREET
BROAD BROOK, CT 06016

BSC GROUP
655 Winding Brook Drive
Glastonbury, Connecticut 06033
860 652 8227

© 2022 BSC GROUP, INC.
1" = 5'
0 2 4 8 FEET

FILE: FILE 8387500/Landscape/Drawings
DWG. NO: BASE
JOB. NO: JOB# 83875.00

ISSUED FOR BID



NOTES:

1. CONTRACTOR SHALL NOTIFY "CALL BEFORE YOU DIG" (1-800-922-4455) AND VERIFY UTILITY MARK-OUT WITH THE OWNER PRIOR TO THE INITIATION OF ANY SITE DISTURBANCE.
2. THE CONTRACTOR IS SOLELY RESPONSIBLE FOR VERIFICATION OF THE LOCATION AND NATURE OF ALL SUBSURFACE UTILITIES AT THE PROJECT WHICH MAY BE AFFECTED BY THE WORK. COORDINATE WITH RESPECTIVE UTILITY OWNERS AND PERFORM VERIFICATION OF TYPE, LOCATION AND INVERTS AS REQUIRED.
3. THE CONTRACTOR SHALL NOTIFY THE ENGINEER OF ANY AND ALL DISCREPANCIES BETWEEN EXISTING CONDITIONS AND THE CONTRACT DOCUMENTS BEFORE PROCEEDING WITH THAT PORTION OF THE WORK.
4. THE LOCATIONS OF EXISTING SITE FEATURES AS SHOWN HAVE BEEN OBTAINED FROM MAPS, SURVEYS, FIELD INSPECTIONS, AND OTHER AVAILABLE INFORMATION. THEY MUST BE CONSIDERED APPROXIMATE BOTH TO LOCATION, SIZE, AND AS-BUILT CONDITION AND ARE PROVIDED FOR INFORMATIONAL PURPOSES ONLY. THE CONTRACTOR IS SOLELY RESPONSIBLE FOR DETERMINING ACTUAL FIELD CONDITIONS.
5. THE DIMENSIONS SHOWN ON THE PLANS, INCLUDING THE INTENDED DIMENSIONS OF THE WORK, MAY VARY FROM ACTUAL EXISTING CONDITIONS IN THE FIELD. THE CONTRACTOR SHALL TAKE APPROPRIATE MEASUREMENTS TO VERIFY ALL DIMENSIONS SHOWN ON THE DRAWINGS AS WELL AS OTHER DIMENSIONS HE MAY DEEM APPROPRIATE TO FACILITATE THE COMPLETION OF THE WORK. DO NOT PROCEED WITH ANY ADJUSTMENT OR FIELD MODIFICATION UNTIL APPROVED BY THE ENGINEER. ENSURE COMPLIANCE WITH CONNECTICUT BUILDING CODE FOR ALL NEW CONSTRUCTION.
6. ENGAGE A CONNECTICUT-LICENSED LAND SURVEYOR TO PERFORM LAND-SURVEYING SERVICES REQUIRED, INCLUDING, BUT NOT LIMITED TO VERIFICATION AND LAYOUT OF PROPOSED IMPROVEMENTS, DIMENSIONS, AND ELEVATIONS. REPORT DISCREPANCIES TO THE ENGINEER.
7. IMPLEMENTING WORKER SAFETY AND/OR HEALTH PROTOCOLS THAT ADDRESS COMPLIANCE WITH RULES, LAWS, AND REGULATIONS PERTAINING TO CONSTRUCTION SAFETY AND/OR THE POTENTIAL AND/OR ACTUAL RISK OF EXPOSURE TO SITE-SPECIFIC PHYSICAL OR CHEMICAL HAZARDS IS SOLELY THE RESPONSIBILITY OF THE CONTRACTOR.
8. THIS DRAWING IS INTENDED TO DEPICT THE LOCATION AND LAYOUT OF CONSTRUCTION AND IS INTENDED TO BE USED IN CONJUNCTION WITH THE MATERIALS PLAN, DETAILS, AND APPLICABLE SPECIFICATION SECTIONS.
9. ALL NON-ACCESSIBLE PARKING SPACES ARE 9' X 18'. HANDICAPPED PARKING SPACES ARE AS INDICATED IN THE DETAILS. VERIFY OVERALL LAYOUT DIMENSIONS BASED ON THESE DIMENSIONS AND THE NUMBER OF SPACES INDICATED. FIELD-ADJUST OVERALL LAYOUT DIMENSION IN CONCERT WITH THE ENGINEER IF REQUIRED.
10. DIMENSIONS INDICATED ARE TO FACE OF CURB, PAVEMENT EDGE, EDGE OF IMPROVEMENT, OR AS OTHERWISE NOTED. NOTIFY THE ENGINEER OF ANY AND ALL DIMENSIONAL DISCREPANCIES BEFORE PROCEEDING WITH THAT PORTION OF THE WORK.
11. UNLESS OTHERWISE INDICATED, LINES ARE PARALLEL OR PERPENDICULAR TO LINE FROM WHICH THEY ARE MEASURED.
12. PROPOSED GRADES INDICATE DESIGN INTENT. VERIFY ELEVATIONS AND MAKE ADJUSTMENTS TO MEET FIELD CONDITIONS. DO NOT PROCEED WITH ANY ADJUSTMENT OR FIELD MODIFICATION UNTIL APPROVED BY THE ENGINEER.
13. VERIFY ALL GRADES AND SLOPES PRIOR TO CONCRETE PLACEMENT. REPORT DISCREPANCIES TO THE ENGINEER BEFORE PROCEEDING WITH THE WORK.
14. COMPLY WITH CONNECTICUT BUILDING CODE FOR ALL SITE CONSTRUCTION, INCLUDING HANDICAPPED ACCESSIBILITY.
15. THE CROSS-SLOPE OF ANY SIDEWALK, WALKWAY, OR OTHER PEDESTRIAN SURFACE SHALL NOT BE STEEPER THAN 1:48 (2%).
16. ACCESSIBLE ROUTES SHALL COMPLY WITH CONNECTICUT BUILDING CODE. THE RUNNING SLOPE OF WALKING SURFACES SHALL NOT BE STEEPER THAN 1:20 (5%). THE CROSS SLOPE OF A WALKING SURFACE SHALL NOT BE STEEPER THAN 1:48 (2%). GRADING CONTOURS AND SPOT GRADES INDICATE DESIGN INTENT. CONFIRM THE GRADE AND SLOPE OF NEW WORK BASED ON ACTUAL FIELD CONDITIONS BEFORE PROCEEDING WITH INSTALLATION. BRING ALL DISCREPANCIES TO THE ATTENTION OF THE ENGINEER BEFORE PROCEEDING.
17. RAMPS SHALL COMPLY WITH CT BUILDING CODE, REF. 2012 IBC SECTION 1010 AND ICC/ANSI A117.1 2009 CHAPTER 4, SECTION 405 AND 406. GRADING CONTOURS AND SPOT GRADES INDICATE DESIGN INTENT. CONFIRM THE GRADE AND SLOPE OF NEW WORK BASED ON ACTUAL FIELD CONDITIONS BEFORE PROCEEDING WITH INSTALLATION. BRING ALL DISCREPANCIES TO THE ATTENTION OF THE ENGINEER BEFORE PROCEEDING.
18. DETECTABLE WARNINGS SHALL BE A MINIMUM OF 24-INCHES IN DEPTH. AT CURB RAMPS, DETECTABLE WARNING SHALL EXTEND THE FULL WIDTH OF THE RAMP AND BE INSTALLED 6-INCHES FROM THE CURB LINE AT THE RAMP BASE.
19. GRADE TRANSITION BETWEEN TOPOGRAPHIC LINES AND SPOT GRADES SHALL BE UNIFORM UNLESS OTHERWISE INDICATED.
20. UNLESS OTHERWISE INDICATED, BLEND TRANSITIONS IN ELEVATION BETWEEN NEW WORK AND AREAS TO REMAIN AT A MAXIMUM SLOPE OF 1V/2H AND RESTORE WITH SIX (6) INCHES OF LOAM AND SEED. PROVIDE ADDITIONAL EROSION CONTROLS AS REQUIRED. COORDINATE WITH ENGINEER IF DIMENSIONAL CONSTRAINTS REQUIRE STEEPER SLOPES.
21. UPON REACHING PROPOSED SUBGRADE ELEVATIONS WITHIN THE FIELD, ENGINEER WILL REVIEW SUBGRADE PRIOR TO INSTALLATION OF DRAINAGE SYSTEM. SEE SPECIFICATION SECTION 31 2310 - EARTHWORK.
22. ALL CATCH BASINS AND SHALLOW DROP INLETS SET AGAINST CURBS SHALL BE CONNODOT TYPE "C". ALL OTHERS SHALL BE CONNODOT TYPE "C-L".
23. ALL UNDERDRAINS SHALL BE 4-INCH HDPE. SEE SPECIFICATIONS.
24. THE TOPS, RIMS, FRAMES, GRATES, AND COVERS (AS APPLICABLE) OF ALL UTILITY STRUCTURES THAT ARE TO REMAIN SHALL BE ADJUSTED TO MATCH FINAL GRADE IN A FLUSH CONDITION. ALL NEW UTILITY STRUCTURES SHALL BE INSTALLED WITH TOPS, RIMS, FRAMES, GRATES, AND COVERS (AS APPLICABLE) TO FINAL GRADE IN A FLUSH CONDITION.
25. AT THE CONCLUSION OF THE WORK, CONTRACTOR SHALL REMOVE ALL ACCUMULATED SEDIMENT MATERIAL FROM ALL PORTIONS OF THE STORM DRAINAGE SYSTEM, INCLUDING NEW WORK AND EXISTING WORK THAT REMAINS OR IS INCORPORATED INTO THE NEW SYSTEM.

PLAYGROUND
AT EAST
WINDSOR PARK

27 RESERVOIR AVENUE

IN

EAST WINDSOR

GRADING AND
DRAINAGE
AND LAYOUT PLAN

MARCH 17, 2023

REVISIONS:

1	03/15/2023	RESPONSE TO ENGINEERING COMMENTS

PREPARED FOR:

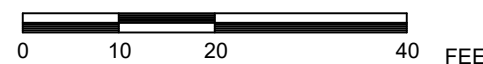
TOWN OF EAST WINDSOR
11 RYE STREET
BROAD BROOK, CT 06016



655 Winding Brook Drive
Glastonbury, Connecticut 06033
860 652 8227

© 2022 BSC GROUP, INC.

1" = 20'



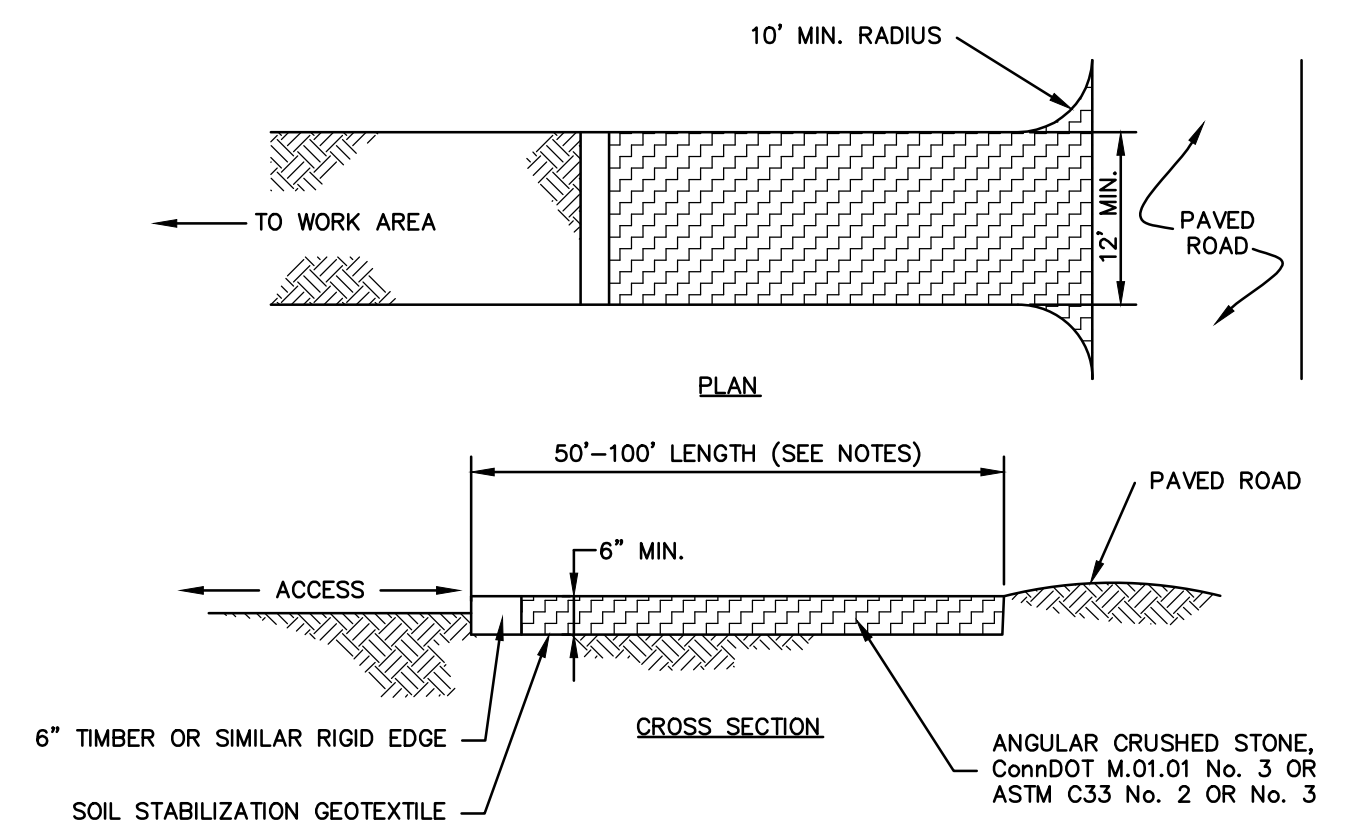
FILE: FILE 8387500/Landscape/Drawings

DWG. NO: BASE

JOB. NO: JOB# 83875.00

L-3.0

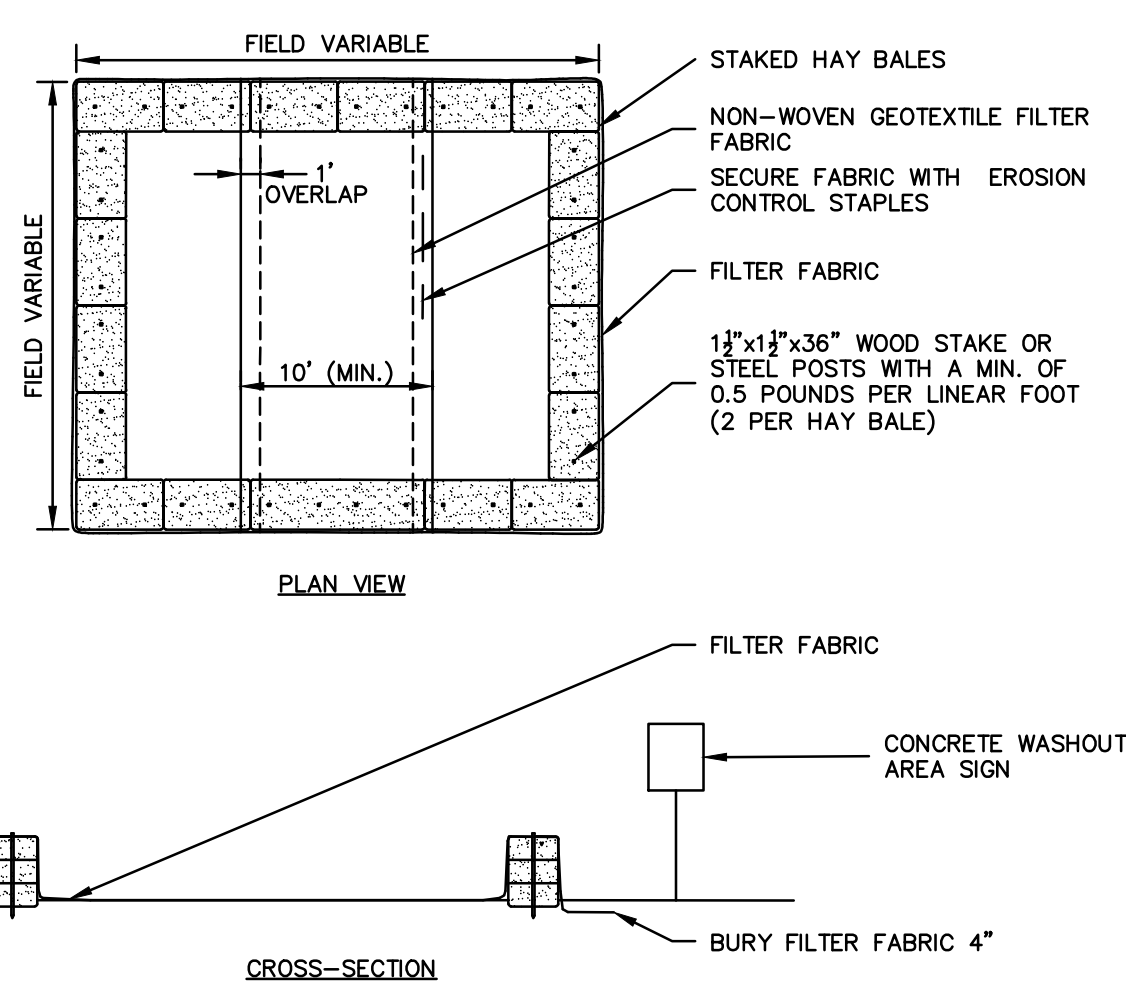
ISSUED FOR BID



- NOTES:**
1. REMOVE TOPSOIL AND ORGANICS PRIOR TO CRUSHED STONE PLACEMENT.
 2. INSTALL SUB-BASE OF FREE DRAINING BACKFILL OR ROAD STABILIZATION GEOTEXTILE AS NECESSARY ON UNSTABLE SOILS.
 3. LENGTH SHALL BE 50 FOOT MINIMUM. WHERE TRACKED SEDIMENTS CONTAIN LESS THAN 80% SAND, LENGTH SHALL BE 100 FOOT MINIMUM.
 4. IF THE GRADE OF THE CONSTRUCTION ENTRANCE DRAINS TO THE PAVED SURFACE AND IT EXCEEDS 2% SLOPE, CONSTRUCT ENTRANCE AT LEAST 15 FEET FROM ITS ENTRANCE ONTO THE PAVED SURFACE WHILE DIVERTING RUN-OFF WATER TO A SETTLING OR FILTERING AREA.
 5. CONSTRUCT ANY DRAINAGE AND SETTLING FACILITIES REQUIRED TO ACCOMMODATE VEHICLE WASHING OPERATIONS. DIVERT ALL WASH WATER AWAY FROM ENTRANCE TO THE SETTLING AREA.
 6. MAINTAIN ENTRANCE IS A CONDITION THAT WILL PREVENT WASHING OF SEDIMENT ONTO PAVED SURFACES.

CONSTRUCTION ENTRANCE

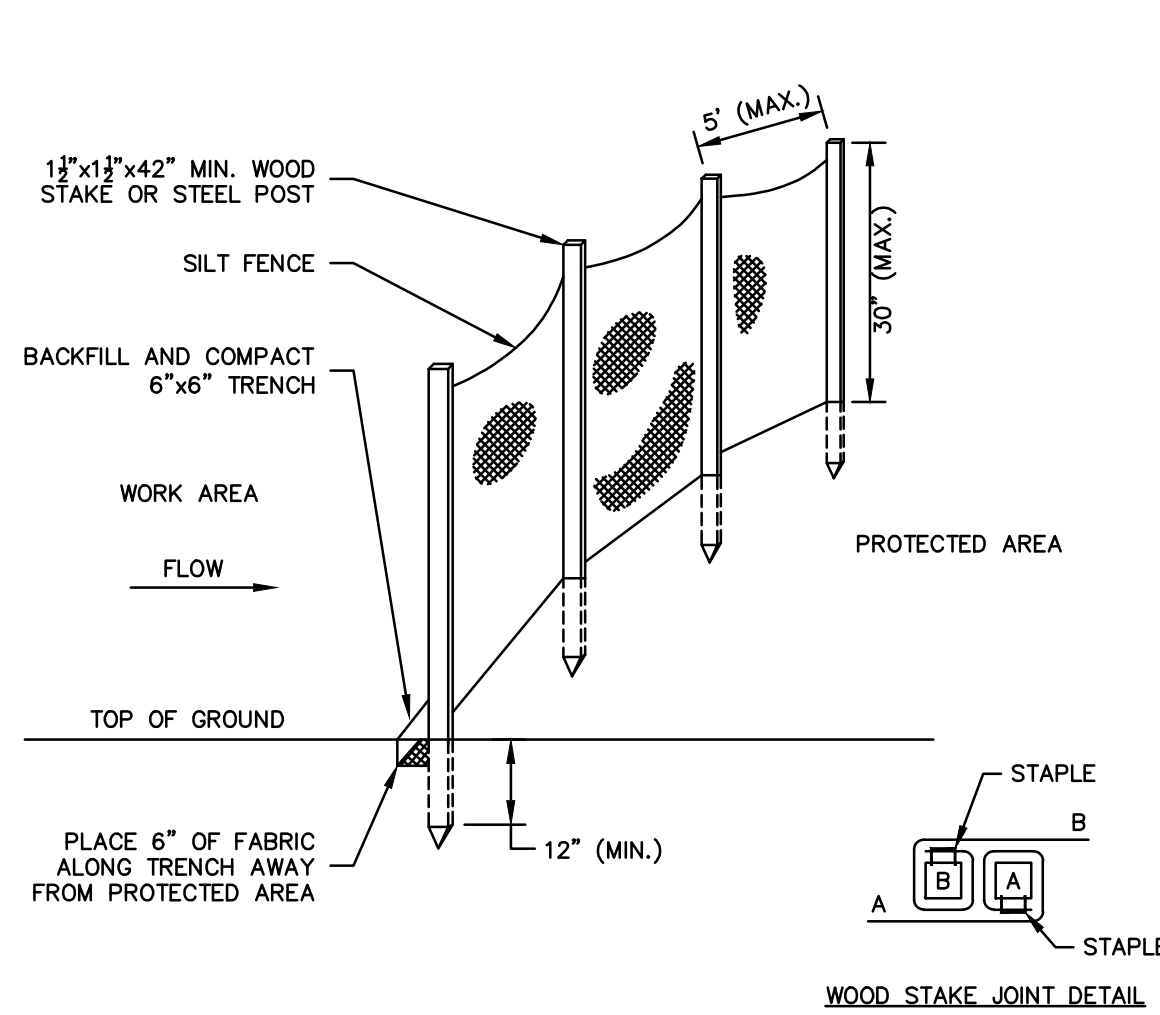
SCALE: NONE



- NOTES:**
1. CONSTRUCT WASHOUT AREA LARGE ENOUGH TO ENSURE MATERIALS WILL BE CONTAINED WHERE WASTE CONCRETE CAN SOLIDIFY IN PLACE AND EXCESS WATER CAN SAFELY EVAPORATE.
 2. WASHOUT AREA SHALL BE LARGE ENOUGH TO RETAIN ALL LIQUID AND WASTE CONCRETE MATERIALS FROM WASHOUT OPERATION.
 3. WEEKLY INSPECTIONS OF WASHOUT AREAS SHALL BE CONDUCTED TO ASSESS THE HOLDING CAPACITY AND FUNCTIONALITY OF THE WASHOUT AREA.

TEMPORARY CONCRETE WASHOUT AREA

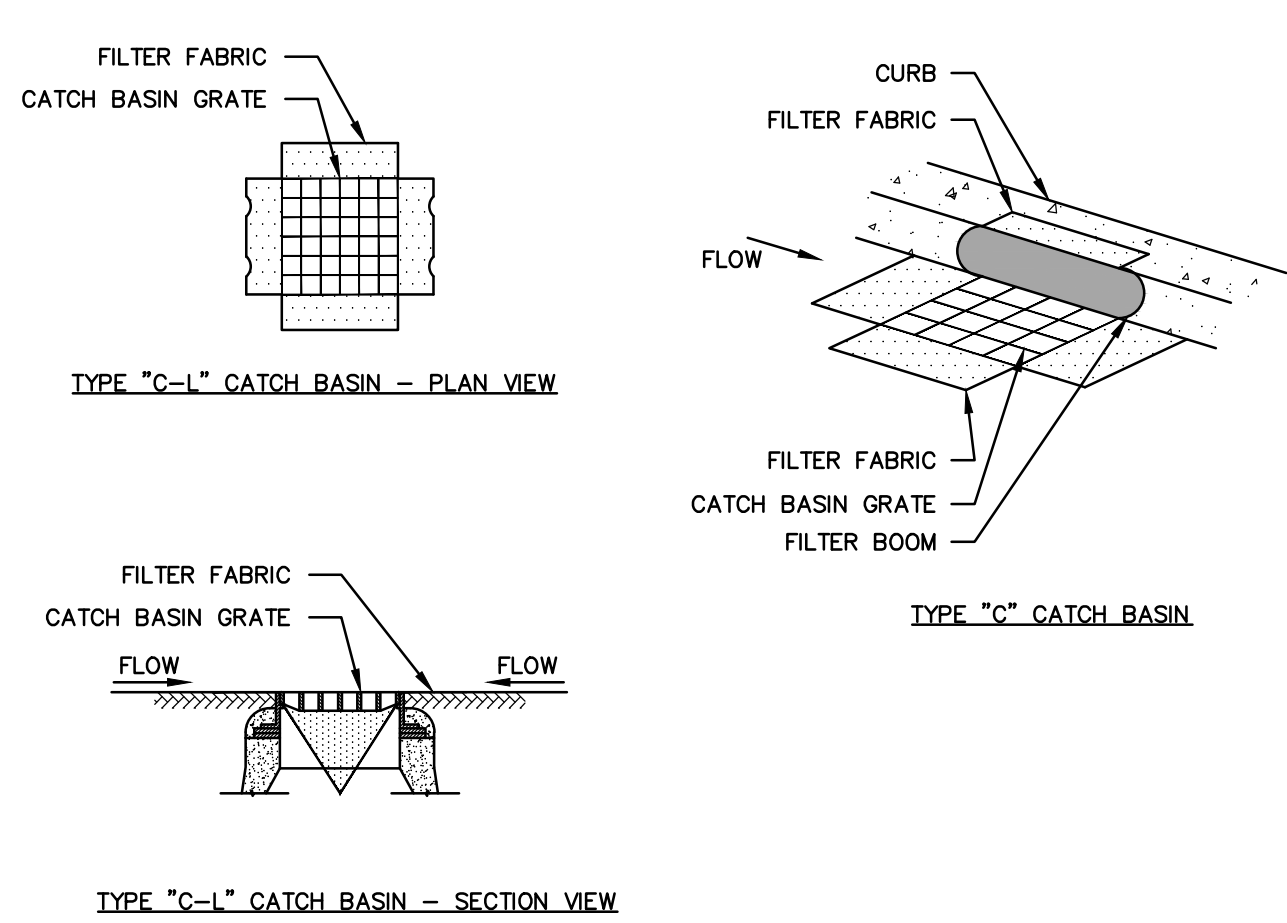
SCALE: NONE



- NOTES:**
1. FOR SLOPE & SWALE INSTALLATIONS, EXTEND FENCE UP SLOPE SUCH THAT BOTTOM ENDS OF FENCE WILL BE HIGHER THAN THE TOP OF THE LOWEST PORTION OF FENCE.
 2. FOR FENCE INSTALLED ON LEVEL TERRAIN INSTALL WING SECTIONS PERPENDICULAR TO MAIN BARRIER AT 50'-100' INTERVALS.

SILT FENCE BARRIER

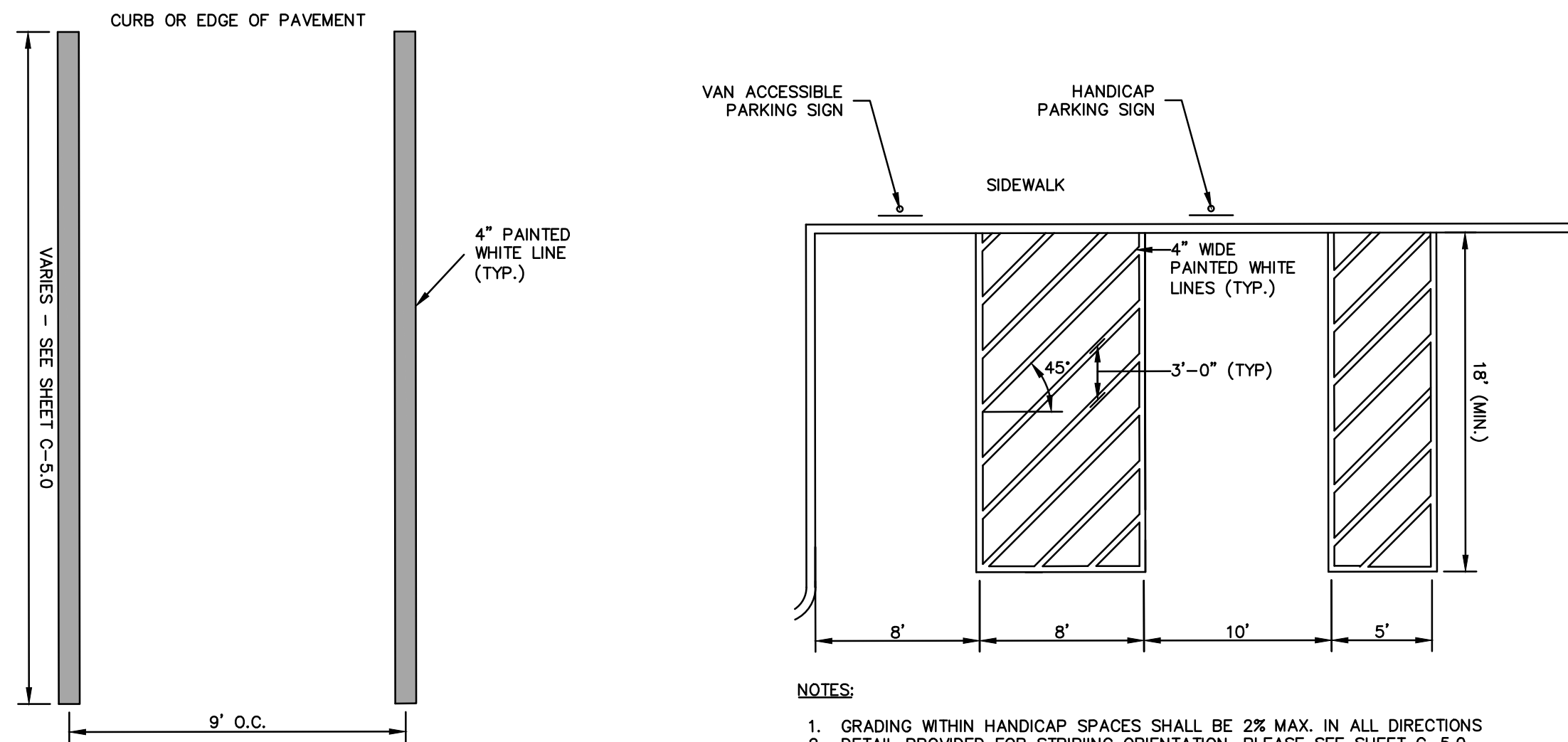
SCALE: NONE



- GENERAL NOTES:**
1. PROVIDE INLET PROTECTION TO ALL EXISTING CATCH BASINS IN THE VICINITY OF CONSTRUCTION. PROTECT NEW CATCH BASINS AS THEY ARE CONSTRUCTED.
 2. GRATE TO BE PLACED OVER FILTER FABRIC.

CATCH BASIN FILTER INSERT

SCALE: NONE

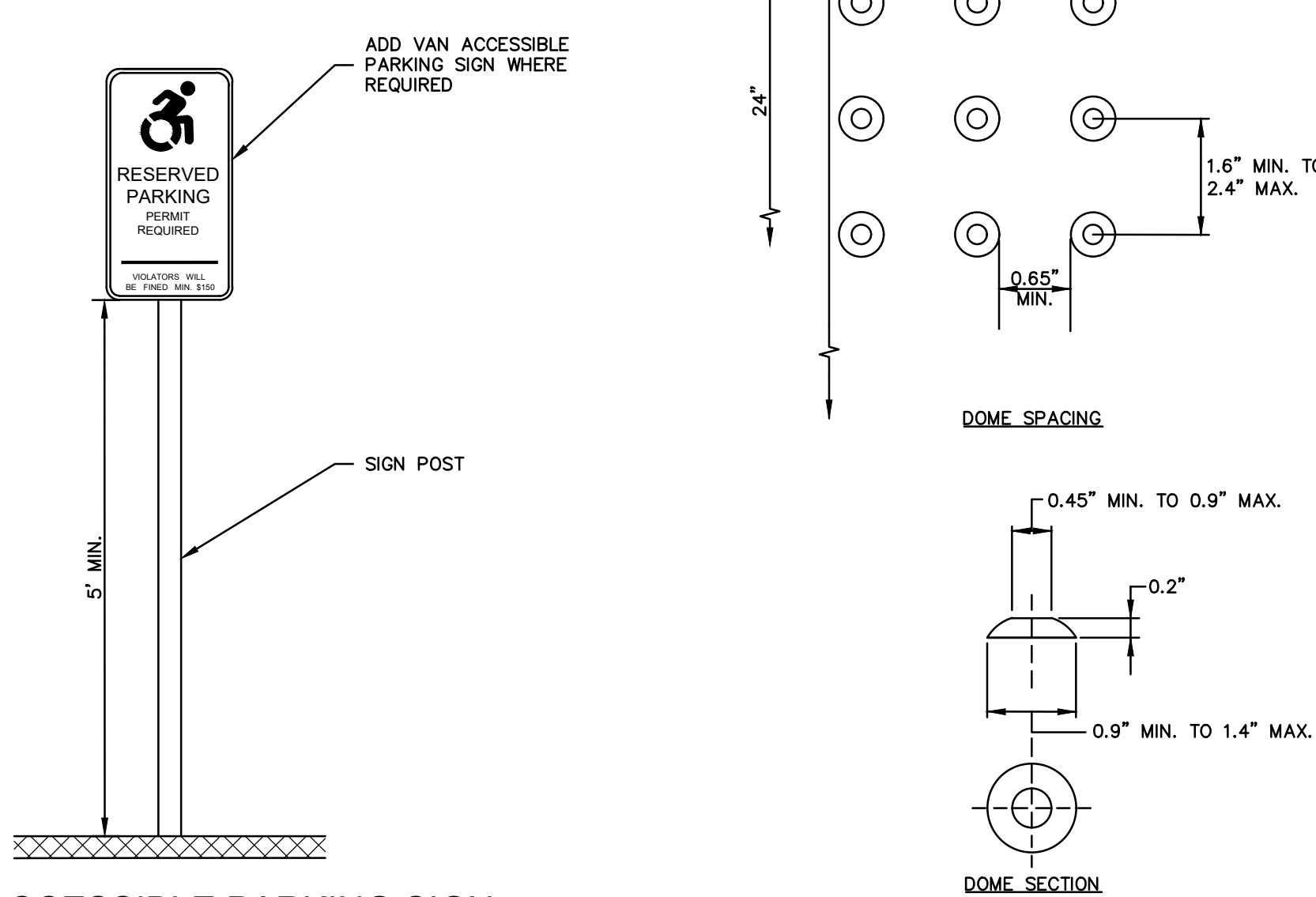


STANDARD PAINTED PARKING MARKINGS

SCALE: NONE
HC-110-CT

ACCESSIBLE PARKING SPACES

SCALE: NONE
HC-111-CT

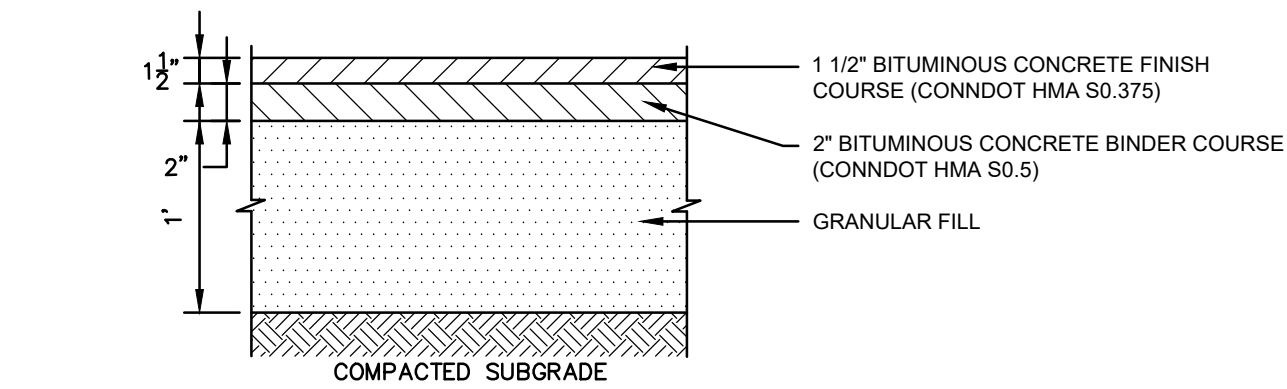


ACCESSIBLE PARKING SIGN (PROVIDED BY OTHERS)

SCALE: NONE

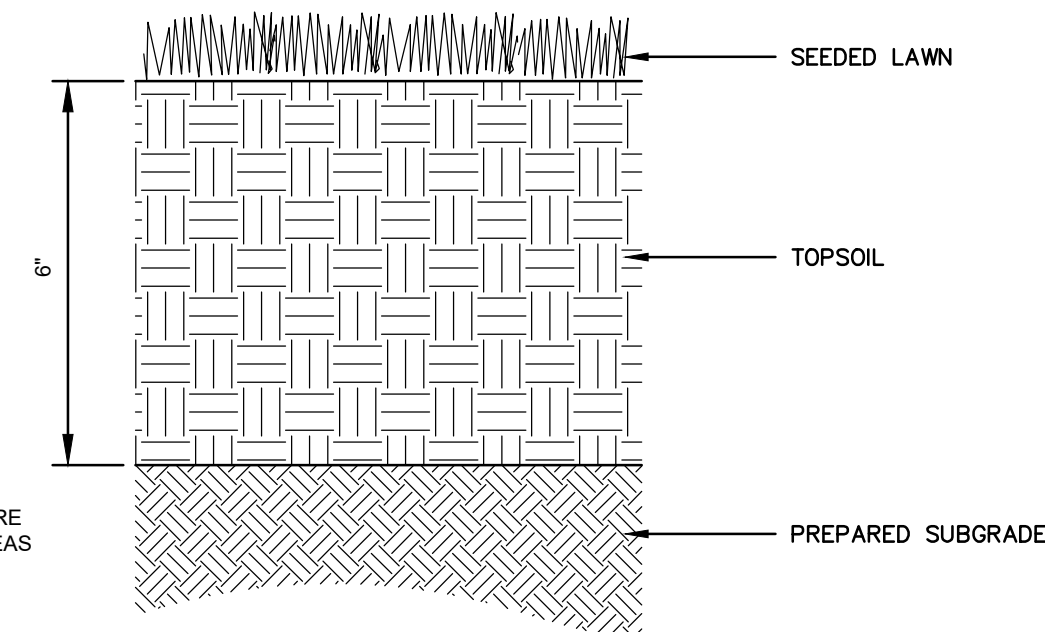
DETECTABLE WARNING STRIP

SCALE: NONE
HC-108-CT



BITUMINOUS CONCRETE PAVEMENT

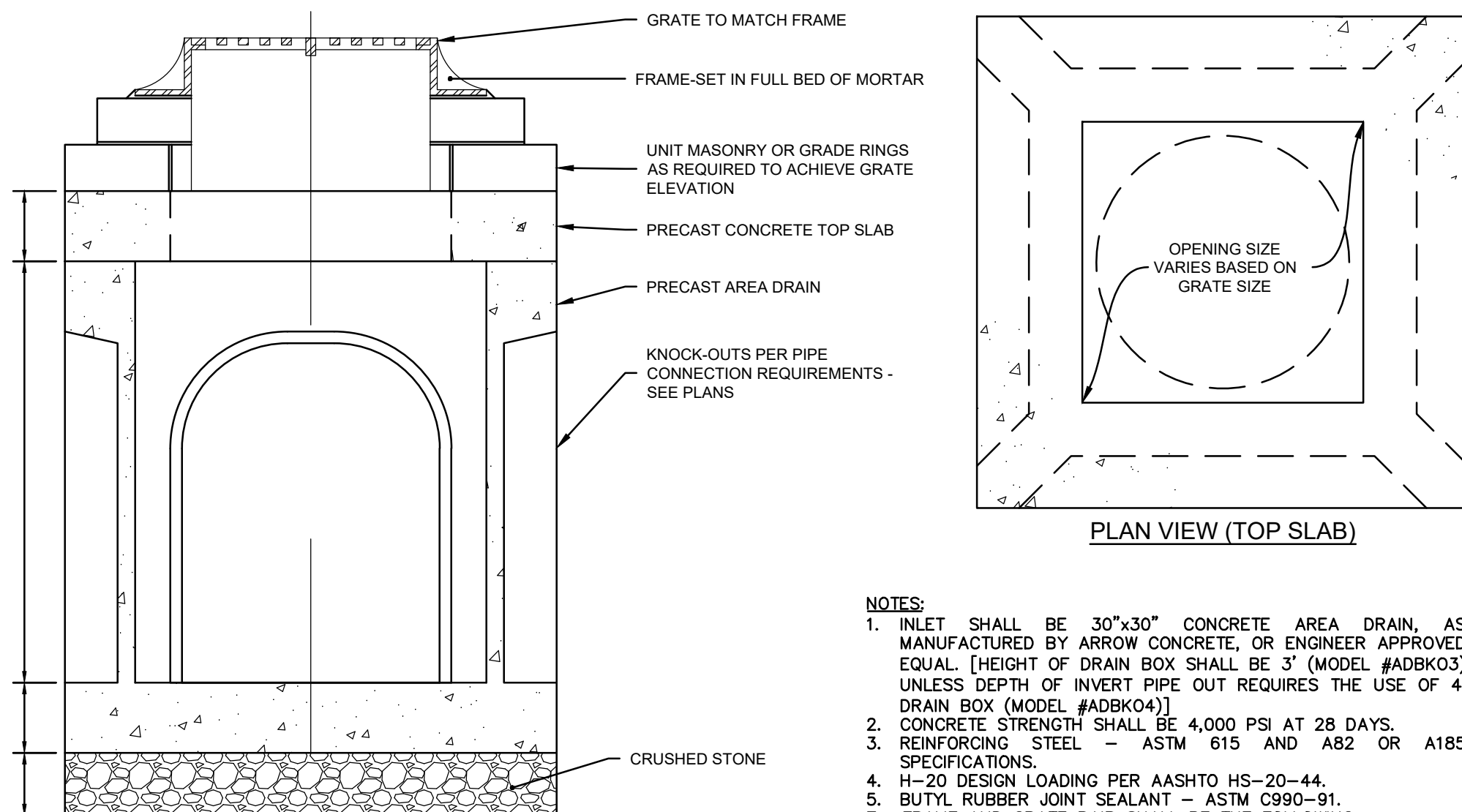
SCALE: NONE



- NOTES:**
1. CONTRACTOR SHALL PREPARE SOILS IN ALL DISTURBED AREAS AND AREAS USED FOR EQUIPMENT ACCESS.

LAWN

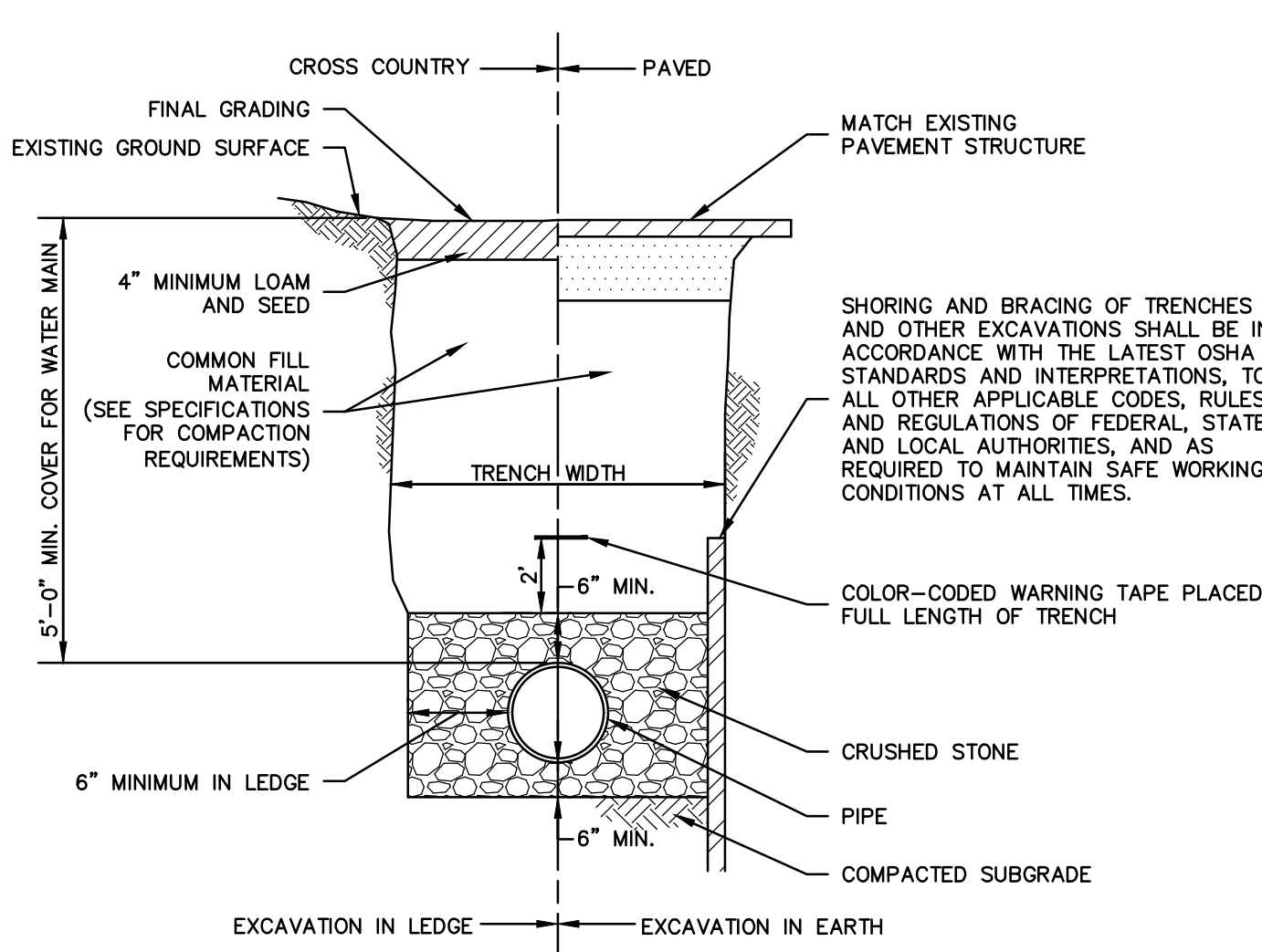
SCALE: NONE



- NOTES:**
1. INLET SHALL BE 30"x30" CONCRETE AREA DRAIN, AS MANUFACTURED BY ARROW CONCRETE, OR ENGINEER APPROVED EQUAL. [HEIGHT OF DRAIN BOX SHALL BE 3" (MODEL #ADBK03) UNLESS DEPTH OF INVERT PIPE OUT REQUIRES THE USE OF 4" DRAIN BOX (MODEL #ADBK04)]
 2. CONCRETE STRENGTH SHALL BE 4,000 PSI AT 28 DAYS.
 3. REINFORCING STEEL - ASTM 615 AND A82 OR A185 SPECIFICATIONS.
 4. H-20 DESIGN LOADING PER AASHTO HS-20-44.
 5. BUTYL RUBBER JOINT SEALANT - ASTM C990-91.
 7. FRAME AND GRATE PAIR SHALL BE THE FOLLOWING:
A. GRATE SHALL BE NEENAH INLET FRAME/GRATE 12" SQ. R-4441 TYPE C OR ENGINEER APPROVED EQUAL.

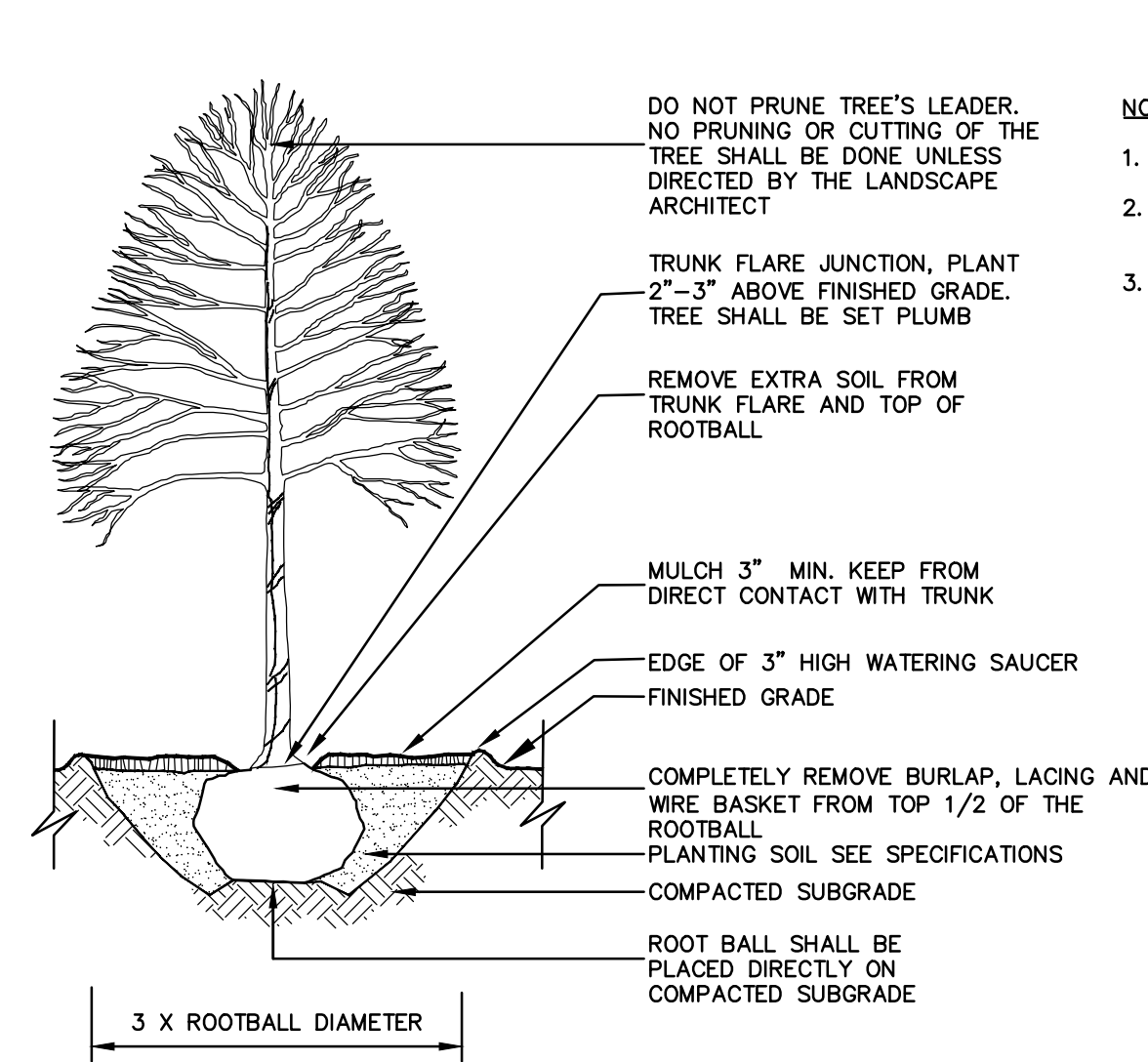
CONCRETE AREA DRAIN

SCALE: NONE



TYPICAL PIPE TRENCH SECTION

SCALE: NONE



- NOTES:**
1. SEE SPECIFICATIONS FOR ADDITIONAL REQUIREMENTS.
 2. SAUCER SHALL BE FLOODED TWICE DURING THE FIRST 24 HOURS AFTER PLANTING.
 3. DO NOT STAKE OR WRAP TREE UNLESS NOTED OTHERWISE.

DECIDUOUS TREE PLANTING

SCALE: NONE

ISSUED FOR BID

PLAYGROUND AT EAST WINDSOR PARK

27 RESERVOIR AVENUE

IN
EAST WINDSOR

DETAILS

MARCH 17, 2023

REVISIONS:

PREPARED FOR:
TOWN OF EAST WINDSOR
11 RYE STREET
BROAD BROOK, CT 06016

BSC GROUP
655 Winding Brook Drive
Glastonbury, Connecticut 06033
860 652 8227

© 2022 BSC GROUP, INC.

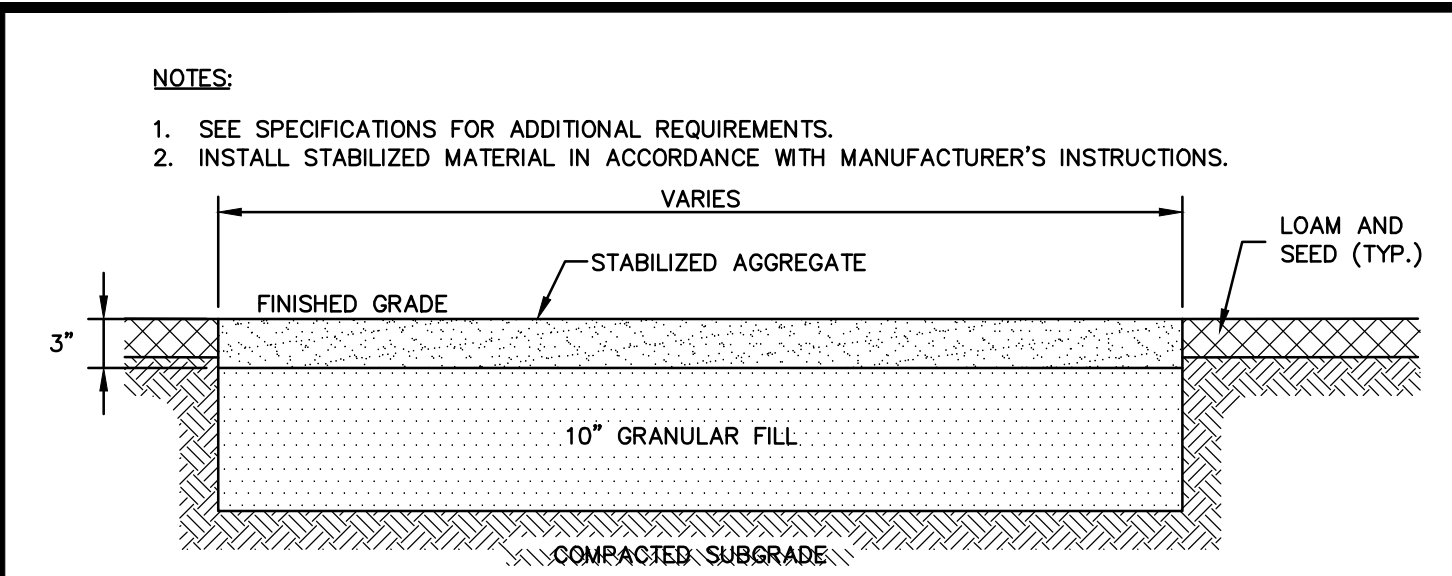
NOT TO SCALE

FILE: FILE 8387500/Landscape/Drawings

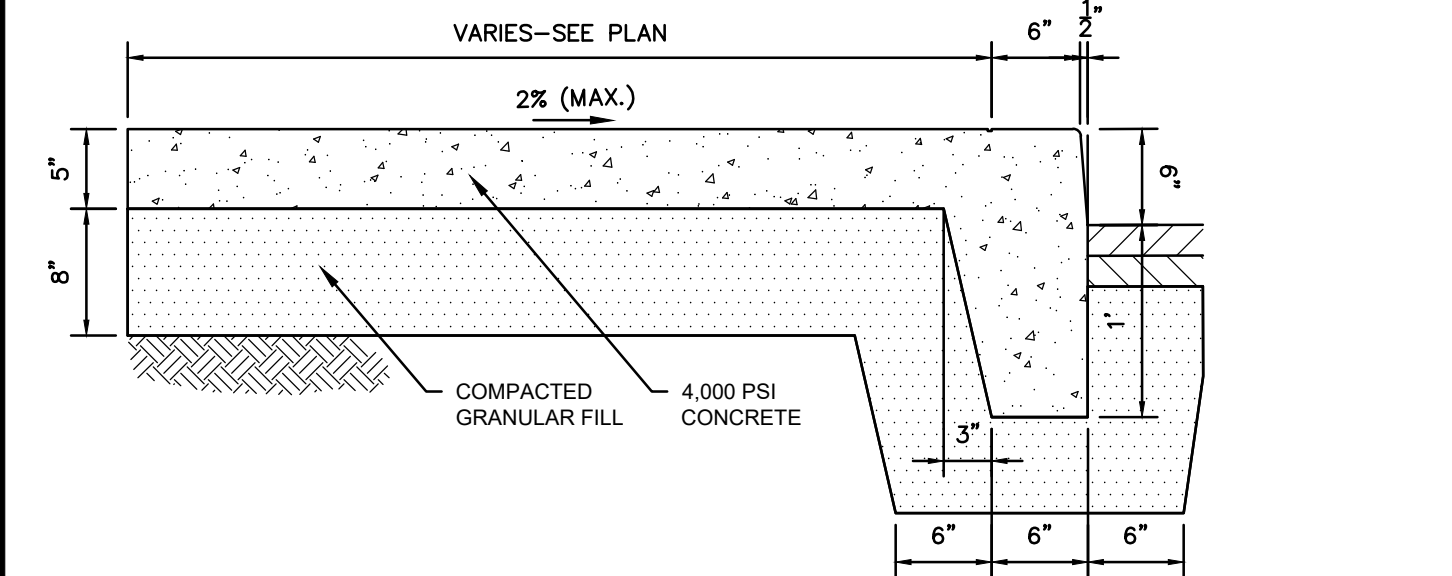
DWG. NO: BASE

JOB. NO: JOB# 83875.00

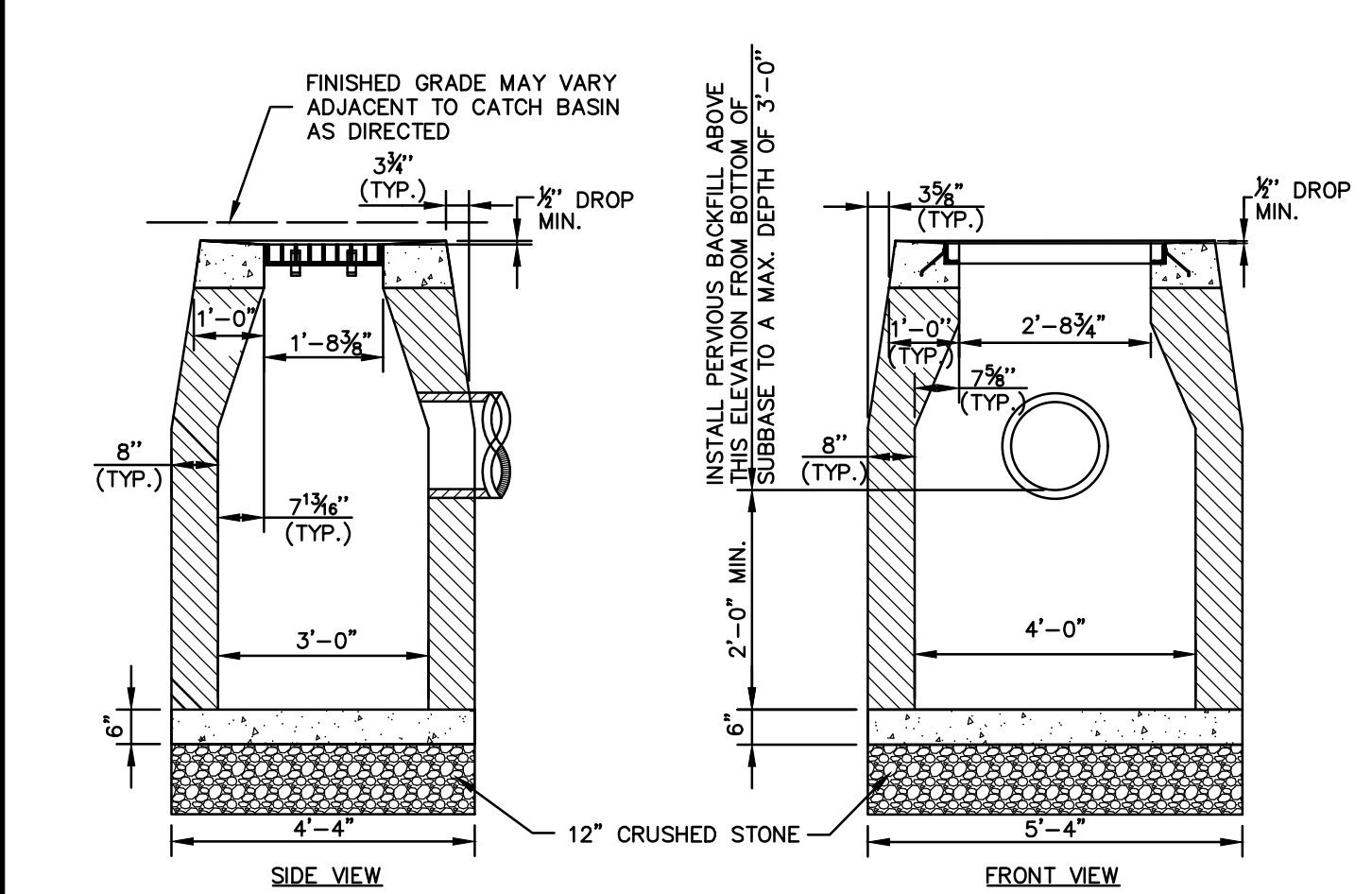
L-4.0



GRAVEL PAVEMENT
SCALE: NONE

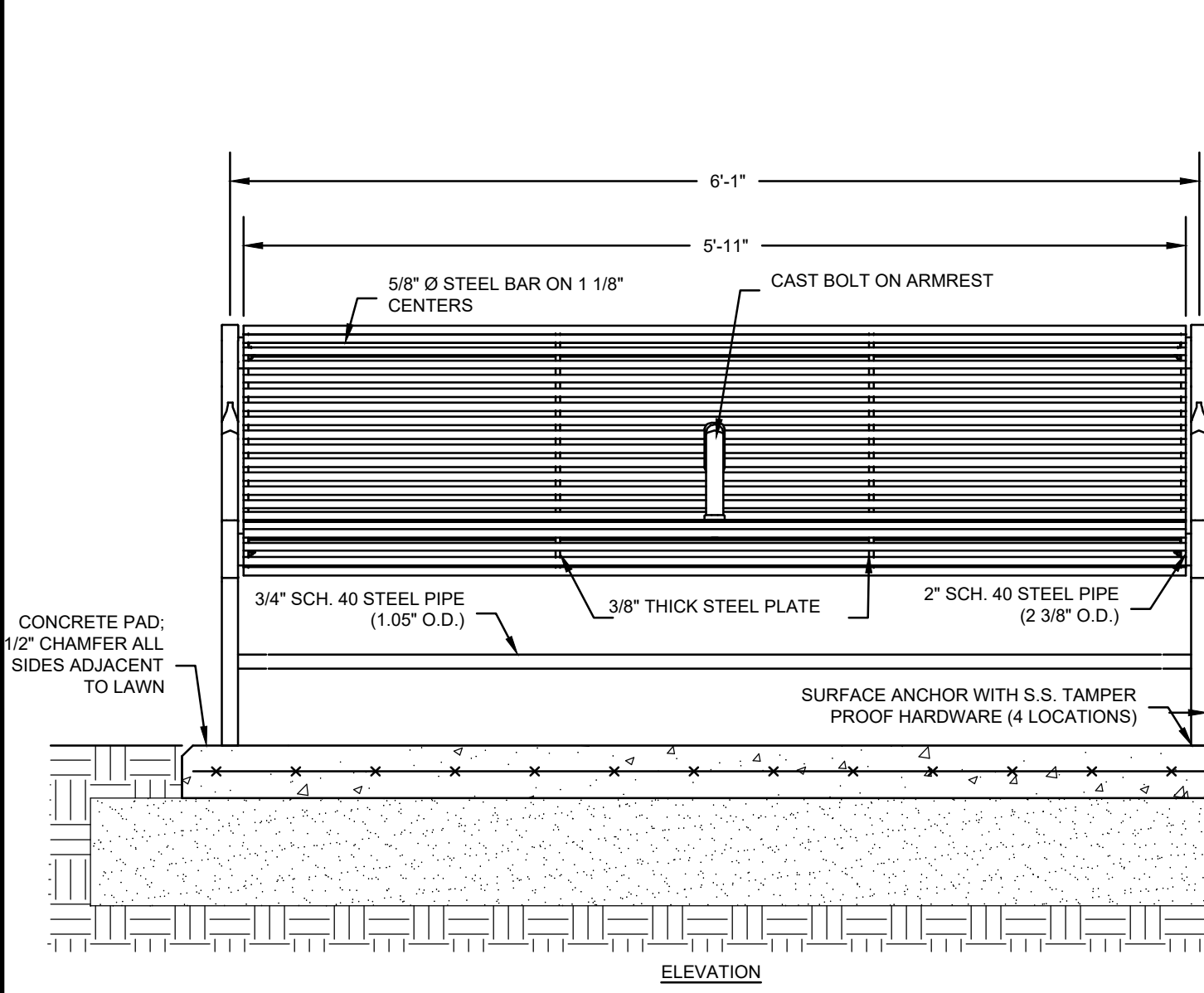


MONOLITHIC CONCRETE CURB & SIDEWALK
SCALE: NONE



- GENERAL NOTES:**
- FRAME AND GRATE SHALL BE CONSTRUCTED PER SPECIFICATIONS.
 - ALL FACES OF STRUCTURES IN CONTACT WITH PAVEMENT SHALL BE COVERED WITH TAR PAPER OR APPROVED EQUAL.
 - TO CONVEY SUBSURFACE DRAINAGE, OPENINGS SHALL BE FORMED IN THE FOUR WALLS AT OR IMMEDIATELY ABOVE THE BOTTOM OF PERVIOUS BACKFILL.
 - WALL THICKNESS OF ALL CB'S OVER 10' DEEP SHALL BE INCREASED TO 12" THICK. INSIDE DIMENSION SHALL REMAIN THE SAME. (12" THICKNESS WILL START AFTER THE FIRST 10').
 - MINIMUM CONCRETE COMPRESSIVE STRENGTH OF F'c = 4000 PSI SHALL BE OBTAINED PRIOR TO SHIPPING.

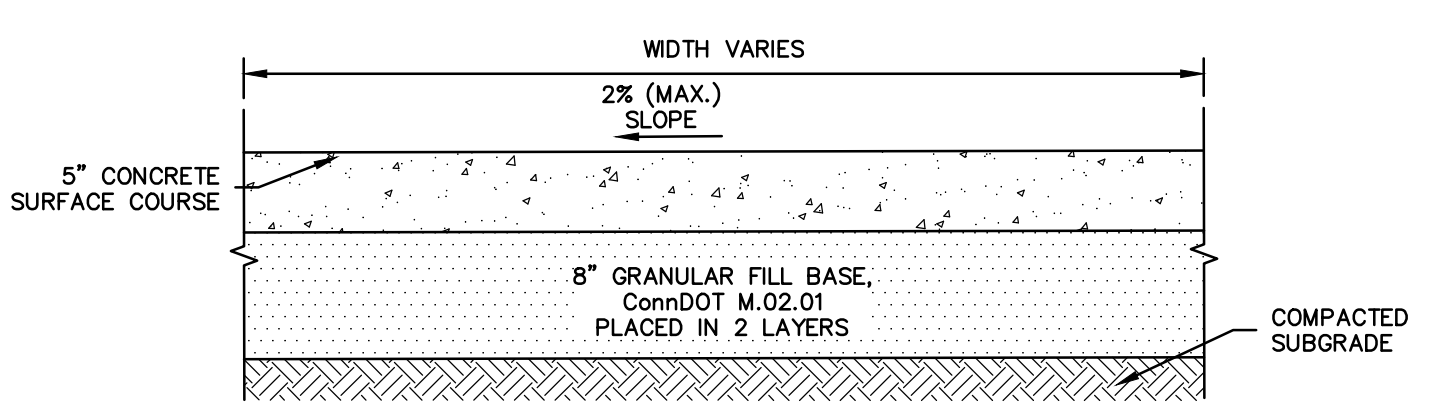
TYPE "C-L" CATCH BASIN
SCALE: NONE
STM-102-CT



PARK BENCH (PROVIDED BY OTHERS)
SCALE: 1" = 1'-0"

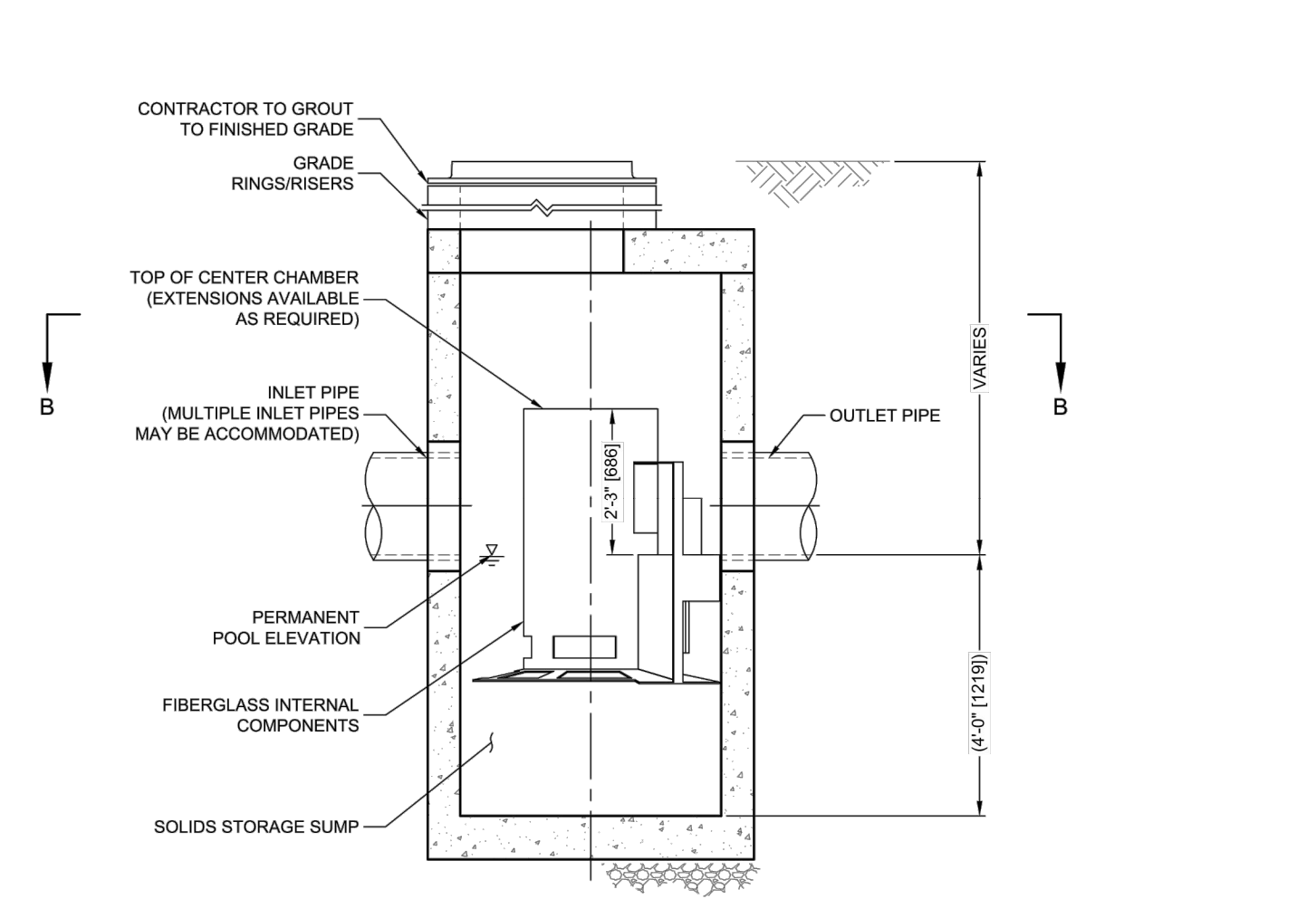
- NOTES:**
- PRIOR TO INITIATION OF CONCRETE FLATWORK, SUBMIT PROPOSED CONSTRUCTION JOINT PLAN TO THE ENGINEER FOR REVIEW AND APPROVAL. COORDINATE SUCH PLAN WITH THE JOINT PATTERNS DEPICTED ON THE DRAWINGS.
 - FORM CONSTRUCTION JOINTS WITH BULKHEAD/FORMWORK TO ENSURE A SMOOTH, CLEAN EDGE FREE OF SAGS OR IRREGULARITIES.
 - ENSURE PROPER CURING OF THE VERTICAL FACE AFTER REMOVAL OF BULKHEAD/FORMWORK BY APPLYING A LIQUID CURING COMPOUND OR PLASTIC SHEETING.
 - UNLESS OTHERWISE SPECIFIED, CONSTRUCTION JOINTS SHALL BE CONSTRUCTED WITH JOINT FILLER. JOINT FILLER SHALL EXTEND THE FULL DEPTH OF THE SLAB AND SHALL EXTEND THE FULL LENGTH OF THE JOINT. USE OF MULTIPLE PIECES OF JOINT MATERIAL OF LESSER DIMENSIONS TO MAKE UP REQUIRED DEPTH AND WIDTH OF JOINT WILL NOT BE PERMITTED.
 - WHERE JOINTS ARE TO RECEIVE FILLER, RECESS JOINT FILLER 1/4-INCH BELOW FINISH SURFACE OR AS OTHERWISE INDICATED ON THE DRAWINGS.

CONSTRUCTION JOINT IN CONCRETE
SCALE: NONE



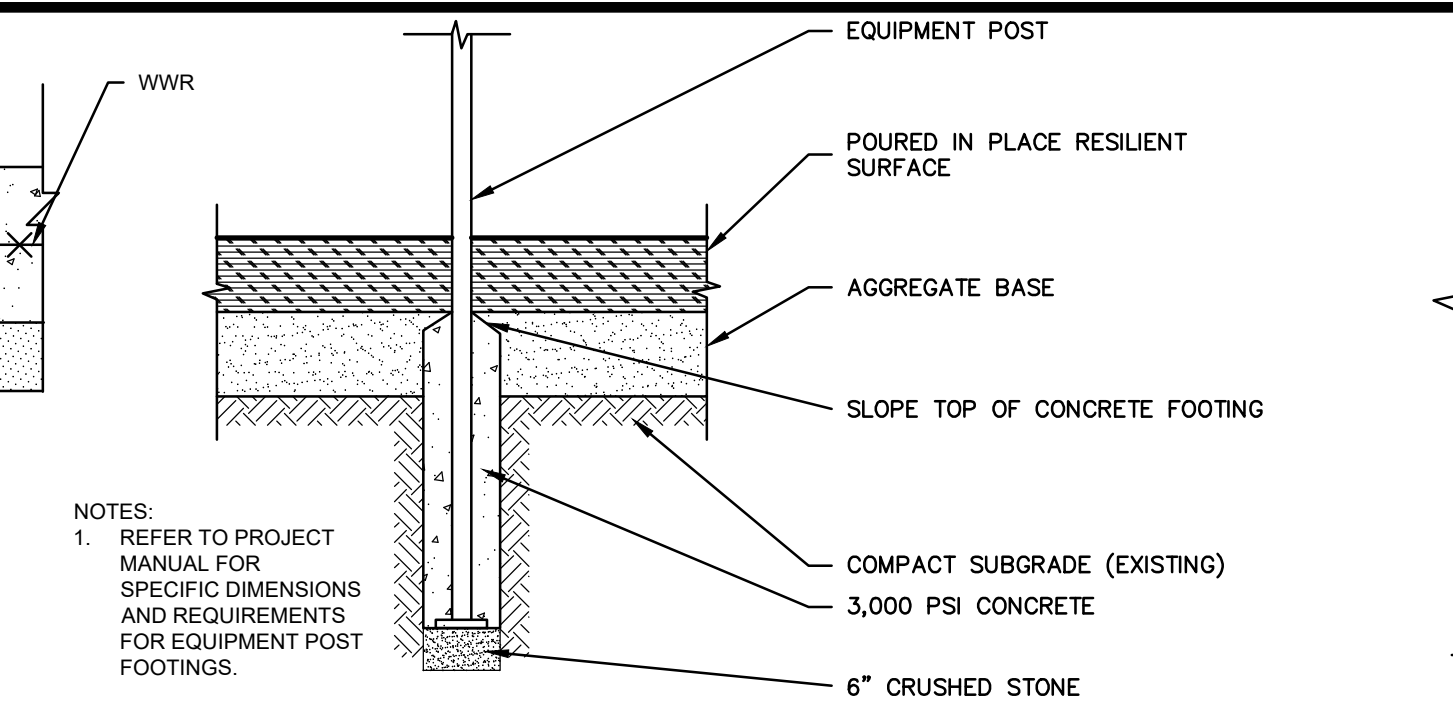
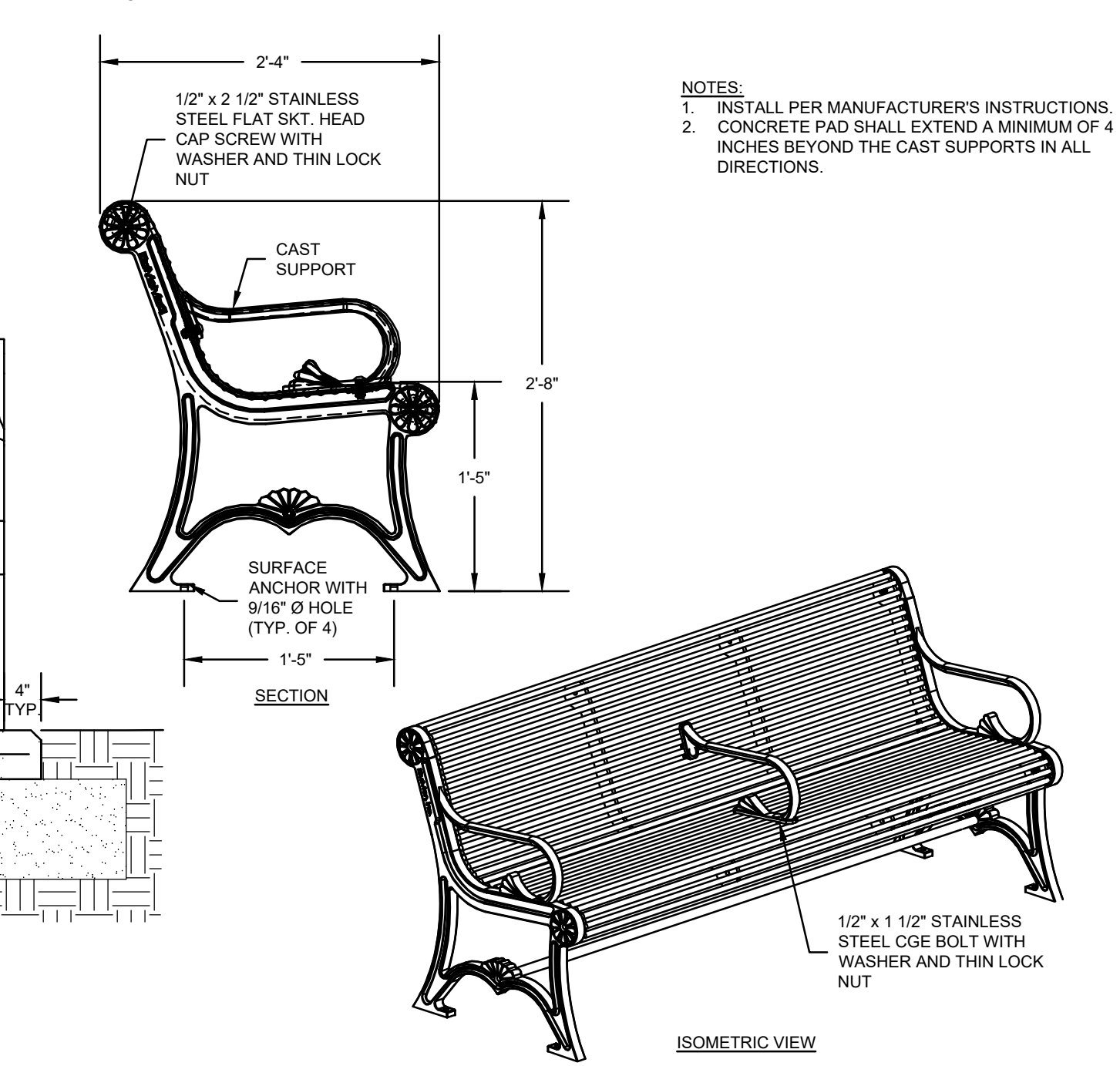
- NOTES:**
- TOOLED CONTROL JOINTS SHALL BE 1/4 SLAB THICKNESS. TOOL JOINTS EARLY IN FINISHING PROCESS AND RE-RUN TO ENSURE GROOVE BOND HAS NOT OCCURRED. PATTERN AS SHOWN ON THE PLANS.
 - FULL-DEPTH JOINTS SHALL INCORPORATE FULL-DEPTH JOINT FILLER PER SPECIFICATIONS.
 - SIDEWALK SHALL HAVE LIGHT BROOM FINISH PERPENDICULAR TO DIRECTION OF TRAVEL.

CONCRETE PAVEMENT
SCALE: NONE

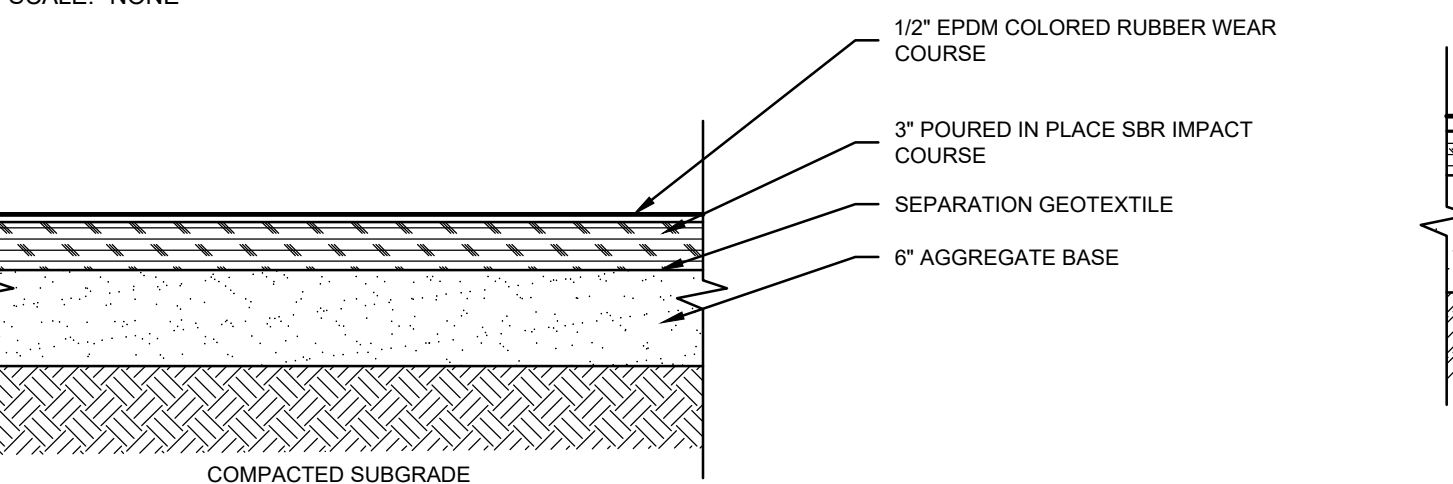


ELEVATION A-A
NOT TO SCALE

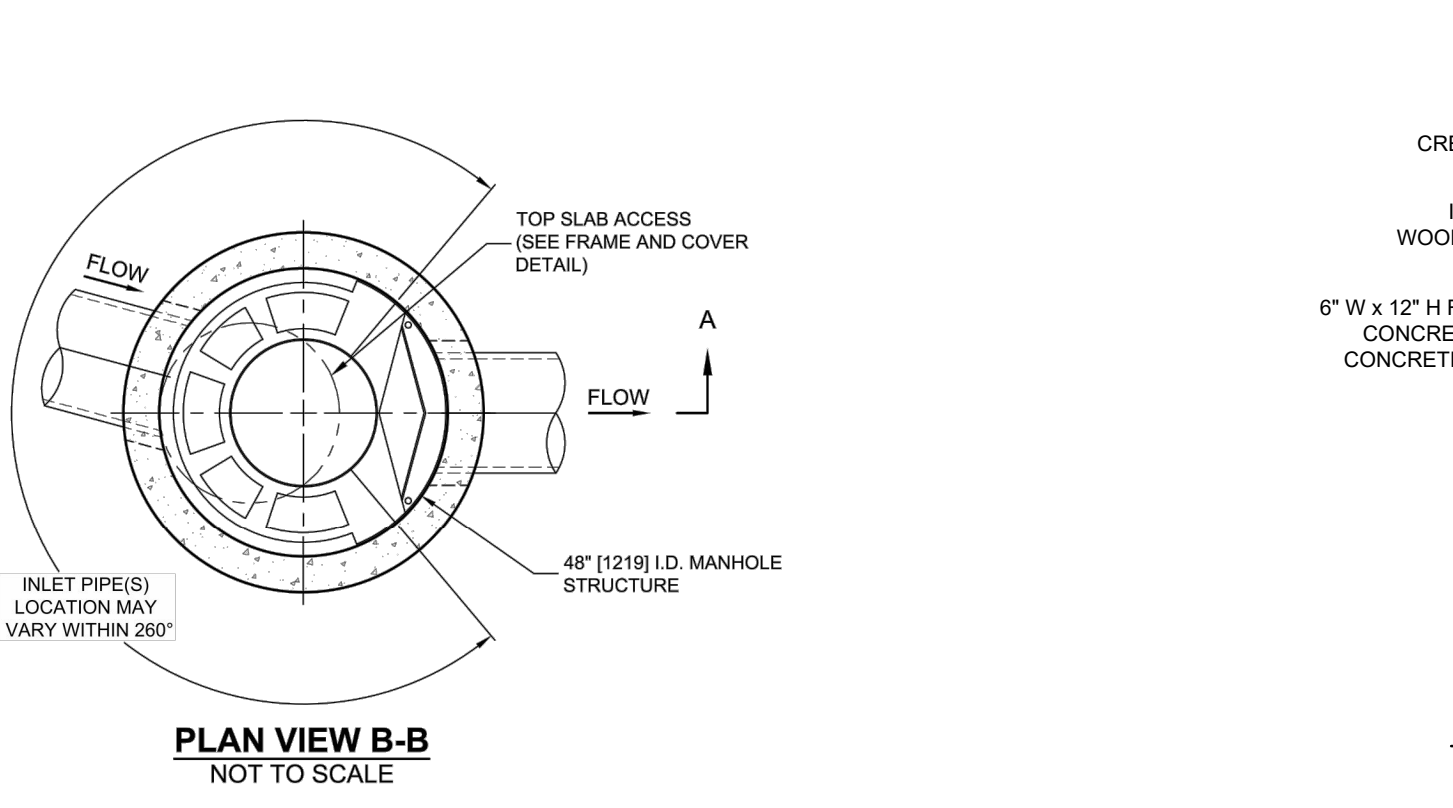
WATER QUALITY UNIT
SCALE: NONE



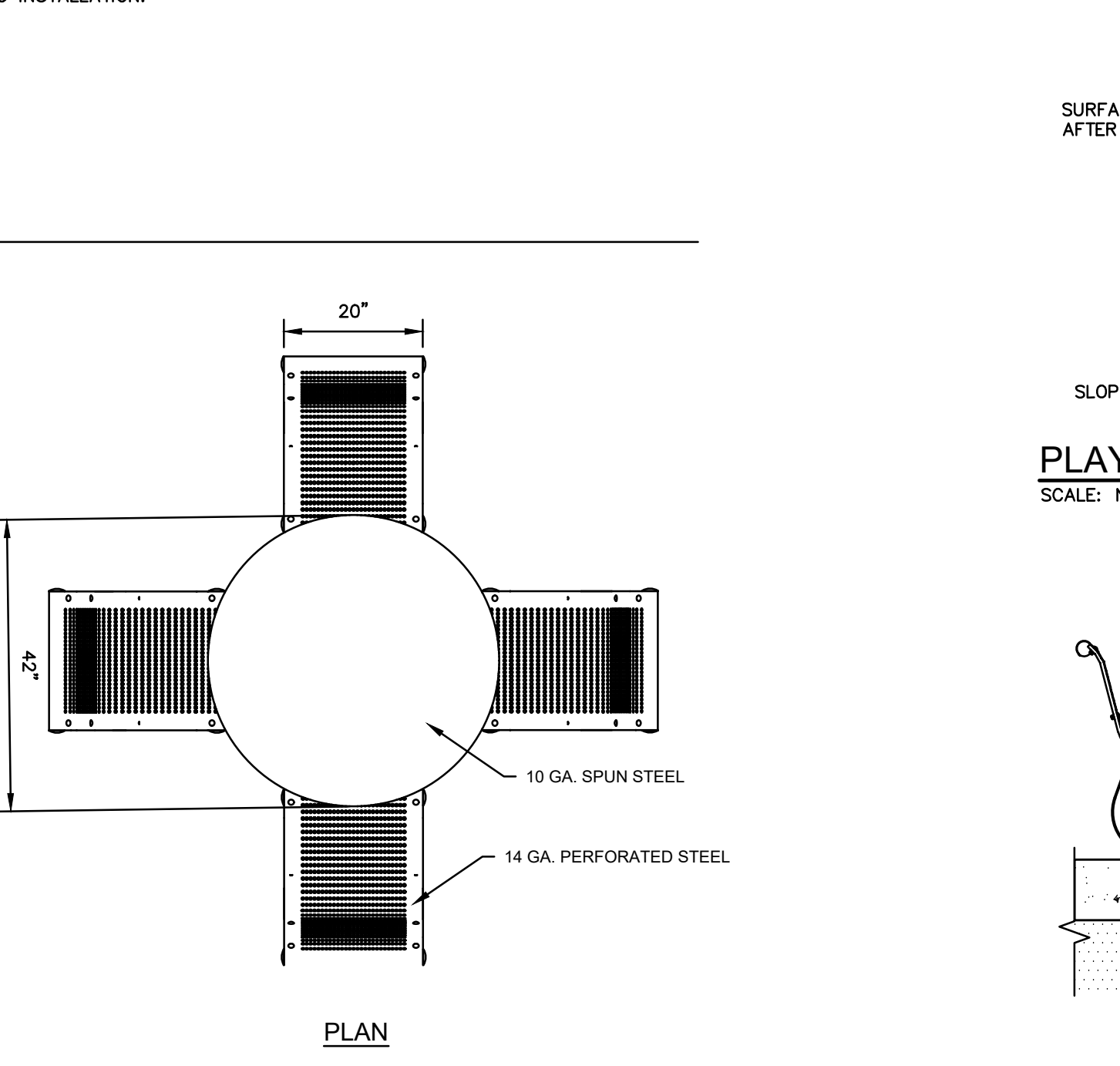
FOOTING IN RESILIENT SURFACING
SCALE: NONE



POURED IN PLACE RESILIENT SURFACING
SCALE: NONE

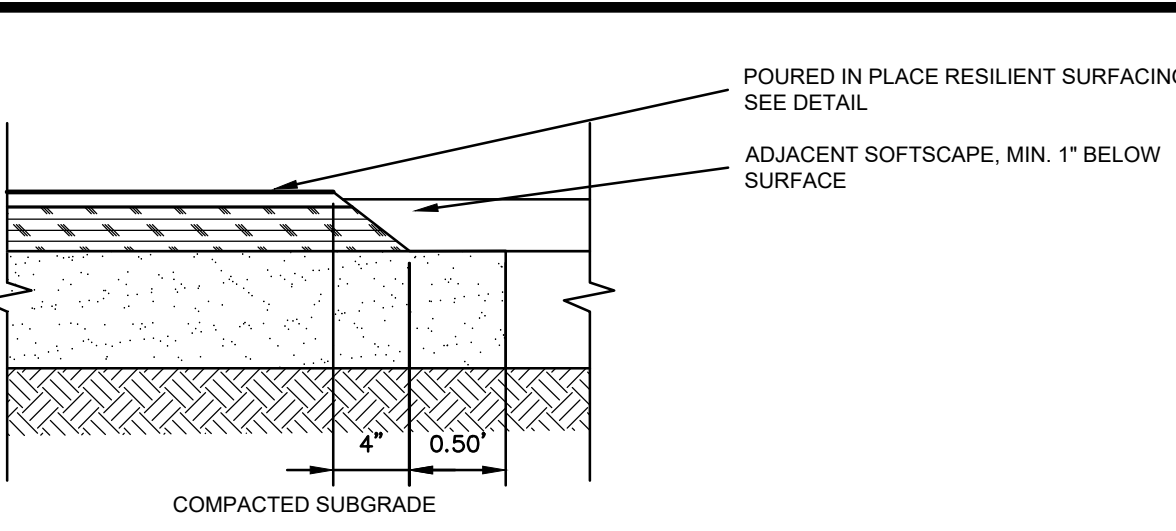


- NOTES:**
- WATER QUALITY UNIT SHALL HAVE AN INLET GRATE.
 - WATER QUALITY UNIT SHALL BE CS-4 CASCADE SEPARATOR AS MANUFACTURED BY CONTECH, OR APPROVED EQUAL.
 - CONTRACTOR SHALL SUBMIT COMPLETE SHOP DRAWING PACKAGE OF SELECTED SYSTEM TO ENGINEER FOR REVIEW AND APPROVAL PRIOR TO INSTALLATION.

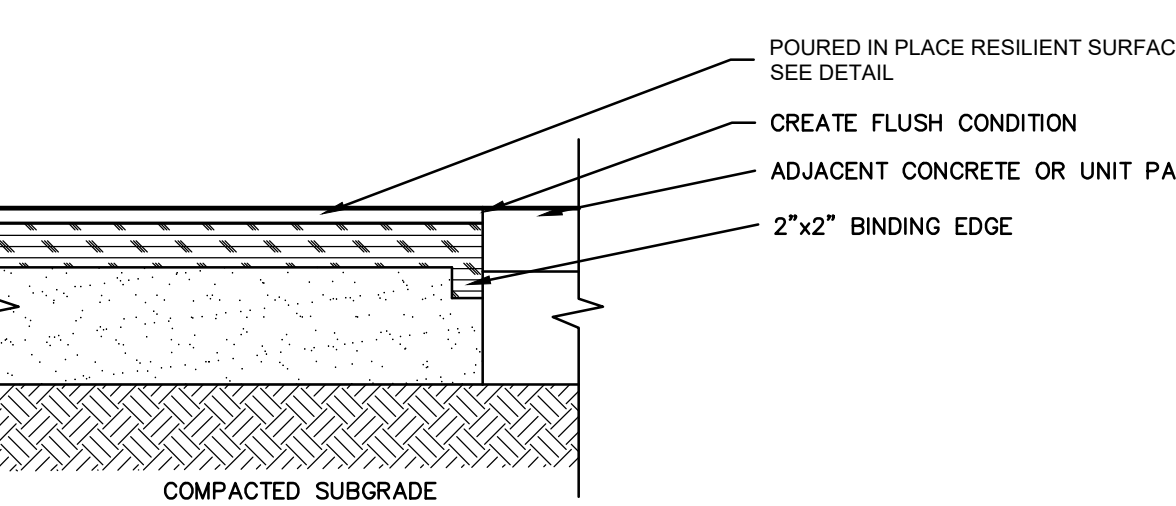


- NOTES:**
- PROVIDE TAMPER RESISTANT ANCHORS.
 - FOLLOW MANUFACTURERS RECOMMENDATIONS FOR ALL SITE FURNISHINGS.
 - SEE SPECIFICATIONS FOR ADDITIONAL DETAILS.

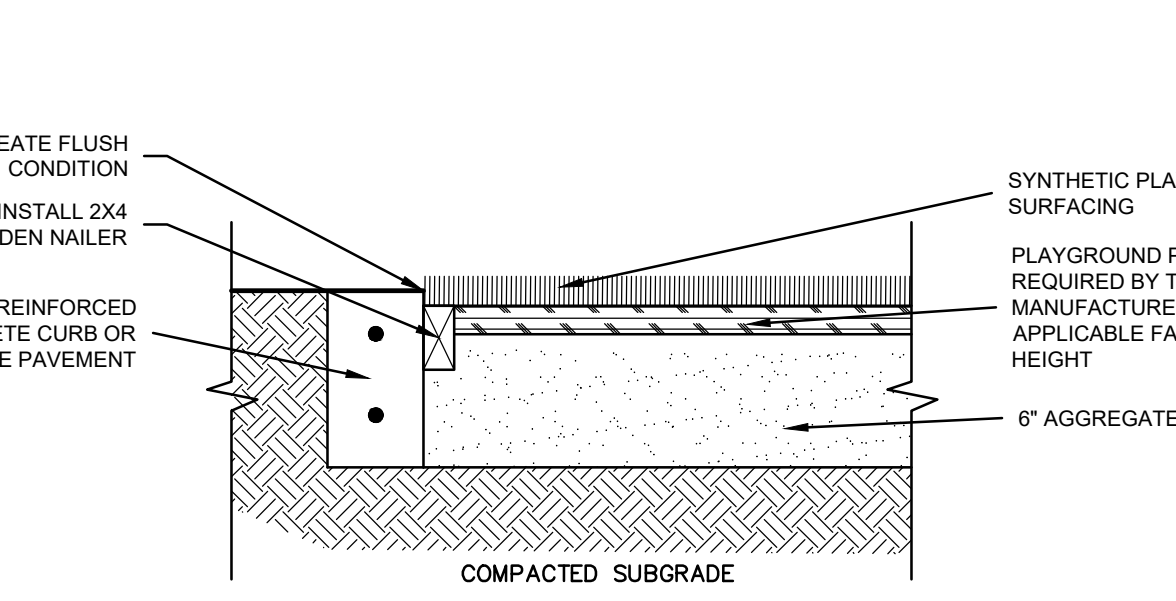
TABLE AND CHAIRS (PROVIDED BY OTHERS)
SCALE: NONE



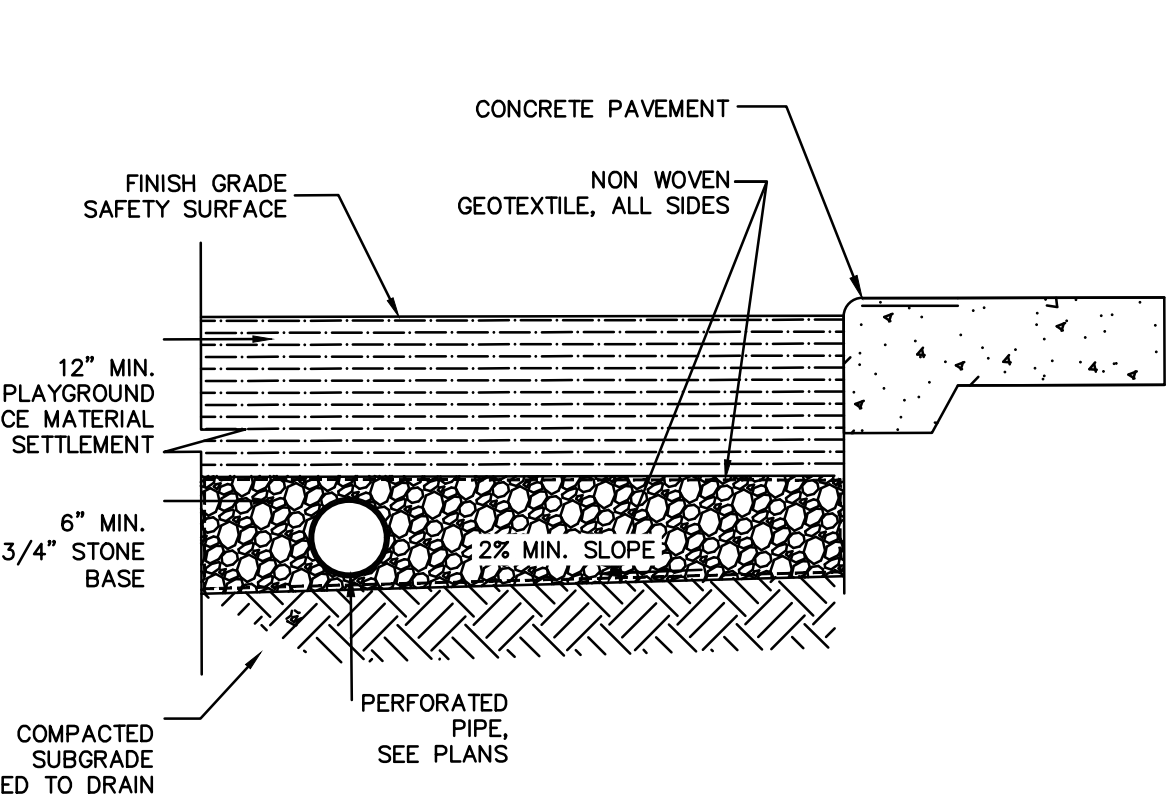
POURED IN PLACE RESILIENT SURFACING AT SOFT EDGE
SCALE: NONE



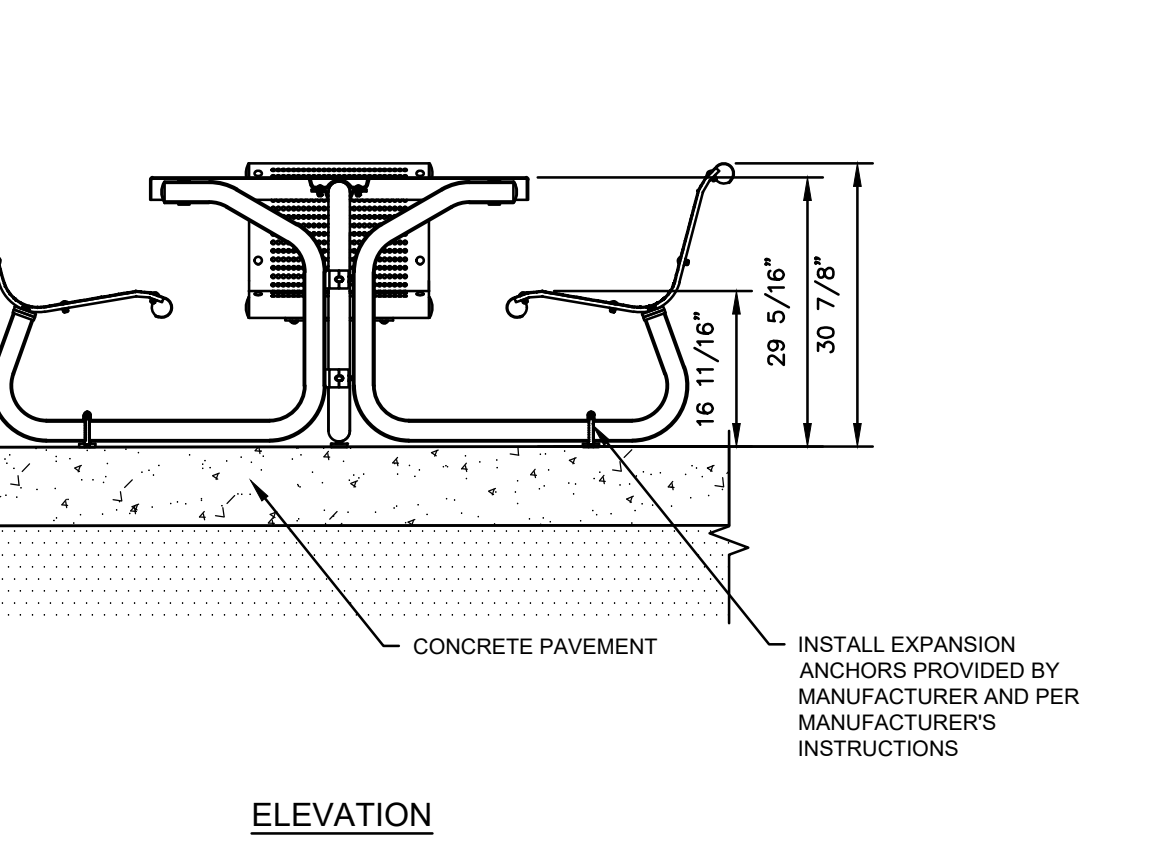
POURED IN PLACE RESILIENT SURFACING AT HARD EDGE
SCALE: NONE



TURF PLAYGROUND SURFACING
SCALE: NONE



PLAYGROUND MULCH SAFETY SURFACE
SCALE: NONE



ELEVATION

PLAYGROUND AT EAST WINDSOR PARK

27 RESERVOIR AVENUE

IN

EAST WINDSOR

DETAILS

MARCH 17, 2023

REVISIONS:		
1	03/15/2023	RESPONSE TO ENGINEERING COMMENTS

PREPARED FOR:

TOWN OF EAST WINDSOR
11 RYE STREET
BROAD BROOK, CT 06016

BSC GROUP

655 Winding Brook Drive
Glastonbury, Connecticut 06033
860 652 8227

© 2022 BSC GROUP, INC.

NOT TO SCALE

FILE: FILE 8387500/Landscape/Drawings

DWG. NO: BASE

JOB. NO: JOB# 83875.00

L-4.1